



3KW-3000KW 柴油发电机组



JHPOWER-201710-01

# 江苏江豪发电机组有限公司

[www.jsjhpower.com](http://www.jsjhpower.com)



## 江苏江豪发电机组有限公司

JIANGSU JIANGHAO GENERATOR CO.,LTD

电话/Tel:+86-523-86188882 传真/Fax:+86-523-86188887

邮箱/E-mail:fcs003@163.com 官网/Web: [www.jsjhpower.com](http://www.jsjhpower.com)

地址/Add:江苏省泰州市医药高新区西徐路一号

NO.1 Xixu Road, Taizhou City, Jiangsu Province,China





## ■ 公司简介

江苏江豪发电机组有限公司专注致力于高品质柴油、燃气发电机组的科研、生产和服务为一体的生产企业。公司坐落在京剧大师梅兰芳的故乡--泰州市。泰州南靠江阴市，东临南通市，紧靠上海港，交通极为便利。

我公司生产的发电机组功率从3KW至3000KW，涵盖各种用途，功能有静音型、集装箱型、移动电站型、自动化型、多台并网型、远程集中监控型等。广泛应用于工矿企业、通信、部队、港口、高速公路、铁路、宾馆等场所，是理想的应急备用电源设备。江豪以令人信服的品质与服务在发电机组行业与客户中建立起良好的美誉度，产品远销国外几十个国家和地区。

江豪系列发电机组采用中美合资康明斯（CUMMINS）、帕金斯（PERKINS）、瑞典沃尔沃（VOLVO）、韩国斗山宇（DOOSAN）、潍柴（WEICHAI）、上柴（SECC）等国内外知名品牌的发动机作原动力，并选配世界一流技术的斯坦福（STAMFORD）、马拉松（MARATHON）、恒声及国产知名品牌发电机，以保证产品质量优异。

## ■ Company Profile

Jiangsu Jianghao Generator Co., LTD is a company concentrating on the research, production and service of high quality Diesel and Gas Generator set. Our company locate in Peking Opera master mei lanfang's hometown -- taizhou. Taizhou City is in the north of Jiangyin city, west of Nantong City, close to Shanghai port.

Power of our generator from 3KW to 3000KW, covering various uses. Types include silent type, container type, mobile power station type, automation type, Multiple Parallel Type, remote centralized monitoring type, etc. Generators are widely used in mines, communications, army, ports, highway, railway, hotels etc, which is ideal emergency standby equipment. Jianghao establishes good reputation in clients by convincing quality and service in diesel generator set industry, and products are exported to many countries and regions.

Jianghao series generator use sino-us joint CUMMINS, PERKINS, Sweden original Volvo, South Korea original DOOSAN, WEICHAI, and SEDC etc domestic and international famous brands engine, and match the world-class alternators, such as STAMFORD, MARATHON, HENGSHENG and other domestic well-known brand in order to ensure excellent quality of our products.



## 结构特点及性能优势

### Structural characteristics and performance advantages

#### 1、卓越的性能 Excellent performance

选用全球领先的发动机及高效发电机，配以不同设计的控制系统，使产品运行处于最佳状态，动力强劲、性能稳定。纯净正弦波设计，稳定的电压和频率输出，带非线性负载能力强。

By using the world's leading diesel engines, efficient alternators, and controller systems with different designs, it makes diesel gensets running in the best state with enough power and stable performance.

#### 2、环境适应性强 ( 50°C 到 -40°C ) Strong environmental adaptability. ( 50°C to -40°C)

产品在-40°C的环境条件下能可靠运行，低温启动能力强，能在寒冷、热带、风沙、潮湿等恶劣条件下正常运行。

Diesel genset can be started up in the cold weather and work stably at minus 40 degree. They can also be used in the tropical, sand, humidity and other harsh conditions.

#### 3、智能化控制系统 Intellectualized control system

控制系统选用多功能模块设计与电子管理系统相结合，具备自动启动、自动保护、市电/发电自动转换、多机并联及远程通讯等功能，实现产品智能化、网络化管理和控制，使产品运行达到最佳状态，人机界面引导操作，方便使用。

The control system uses multi-function modules and electronic management system, which can carry out functions including auto start, auto protection, auto conversion between main power and genset power, multi-parallel units and remote communication function, etc. It makes the genset comprehensive, intelligent, networked to manage and control, making the genset running in the best state. What's more, it is easy for users to operate and use on the control panel.

#### 4、节能环保 Energy conservation and environment protection

选用具有全球领先技术的发动机，配以高性能减震系统及钢制底座，紧密结构设计，振动小，噪音低，排放指标优。

Using the engine with the world's leading technology, and being equipped with high performance rubber damper and steel base, diesel gensets have close structural design, small vibration, low noise, and low emission.

#### 5、使用的经济性 Economically

采用标准化设计，零部件通用性强，方便产品配套和维护，选用国际知名品牌发动机，可靠性高，大修期长。先进的燃烧系统及高效率发动机配套设计节省燃油，降低使用成本。

With standardized design, the diesel genset has general spare parts, which make the maintenance convenient. Global famous brand engines have high reliability and long overhaul period. Advanced combustion system and high efficiency engine have the low fuel consumption.

## 目录

### CONTENTS

康明斯系列 Cummins Series	01
沃尔沃系列 Volvo Series	03
帕金斯系列 Perkins Series	05
MTU系列 MTU Series	07
韩国斗山系列 Doosan Series	09
韩国科曼系列 Korman Series	11
日本三菱系列 Mitsubishi Series	13
上柴股份系列 SDEC Series	15
广西玉柴系列 Yuchai Series	17
重庆科克系列 Googol Series	19
潍柴动力系列 Weichai Power Series	21
无锡动力系列 Wudong Series	23
济柴系列 Jichai Series	25
上海乾能系列 Shanghai Qianneng Series	27
山东潍坊系列 Weifang Series	29
燃气发电机组系列 Gas generator set Series	31
康明斯船机系列 Cummins Marine Series	35
潍柴动力船机系列 Weichai Power Marine Series	43
移动拖车系列 Mobile Type Series	47
低噪音系列 Silent Type Series	49
控制系统 Control System	51
机房安装示意图 Machinery Room Layout	53
我们的服务 Our Service	54





### 康明斯系列柴油发电机组

康明斯系列柴油发电机组是采用中美合资B、N、K系列发动机为引擎，其可靠性、经济性一直以来赢得部队、工程、工矿企业的信赖。

康明斯公司创建于1919年2月，总部设在美国印第安纳州哥伦布市，康明斯在全球190多个国家和地区，500多家分销机构，服务网点遍布世界各地，为客户提供了可以信赖的服务保障。作为中国发动机行业最大的外国投资者，康明斯在中国拥有东风康明斯发动机有限公司（生产B、C、L系列）和重庆康明斯发动机有限公司（生产M、N、K系列）等制造企业。

### Cummins series

Cummins series diesel gen-sets adopt the B, N, K series engine(sino-us JVC), which is widely used in army, engineering, mining industry, more reliable, economic. Cummins company was founded in 1919, the H.Q is in Columbus, indiana (USA), and have about 500 distributors spreading in 190 countries and regions, providing customers high efficient service, fast connection with the company. As the top one of JVC in China diesel gen-sets industry, Dongfeng Cummins Engine Co,Ltd(for B,C,L series) & Chongqing Cummins Engine Co., Ltd(for M,N,K series) are its branches.



#### 标准配置 Standard equipment

- 发动机  
Diesel engine
- 启动免维护蓄电池及蓄电池连接线  
Starting batteries and battery connect wires
- 40°C散热水箱  
40°Cwater cooled radiator
- 工业消音器、波纹管  
Silencer and flexible exhaust hose
- 发电机  
Alternator
- 输出断路器  
Output circuit breaker
- 智能控制屏  
Digital control panel
- 钢式底架  
Steel base frame

#### 可选配置 Optional equipment

- 静音箱  
Sound proof
- 全自动控制系统  
ATS
- 50°C散热水箱  
50°Cwater cooled radiator
- 水套加热器  
Water heater
- 自动并机控制系统  
Automatic parallel synchronizing control system

### 康明斯系列发电机组技术参数 Cummins generator technical parameters

机组型号 Model	功率Power KW	电流A KVA	电流A Current	发动机型号 Engine model	缸数 Cylinder	缸径*行程 Bore*Stroke	排气量L Displacement	机油容量L Lube oil	油耗g/kw.h Consumption	尺寸mm Size	重量Kg Weight
东风康明斯											
JHK-24GF	24	30	43.2	4B3.9-G2	4	102*120	3.9	11	208	1620*710*1100	710
JHK-30GF	30	37.5	54	4BT3.9-G2	4	102*120	3.9	11	208	1700*710*1110	800
JHK-40GF	40	50	72	4BTA3.9-G2	4	102*120	3.9	11	210	1800*800*1200	920
JHK-50GF	50	62.5	90	4BTA3.9-G2	4	102*120	3.9	11	210	1800*800*1200	950
JHK-64GF	64	80	115.2	4BTA3.9-G11	4	102*120	3.9	11	210	1850*800*1200	1000
JHK-80GF	80	100	144	6BT5.9-G2	6	102*120	5.9	16	210	2200*800*1200	1250
JHK-100GF	100	125	180	6BTA5.9-G2	6	102*120	5.9	20	207	2200*800*1200	1300
JHK-120GF	120	150	216	6BTA5.9-G2	6	102*120	5.9	24	207	2250*800*1200	1350
JHK-132GF	132	165	237.6	6BTA5.9-G12	6	102*120	5.9	24	207	2300*820*1300	1350
JHK-150GF	150	187.5	270	6CTA8.3-G2	6	114*135	8.3	24	207	2300*820*1330	1600
JHK-180GF	180	225	324	6CTAA8.3-G2	6	114*135	8.3	24	207	2550*1050*1480	1700
JHK-200GF	200	250	360	6LTAA8.9-G2	6	114*145	8.9	28	207	2550*1050*1500	2000
JHK-220GF	220	275	396	6LTAA8.9-G3	6	114*145	8.9	28	203	2550*1050*1500	2000
JHK-400GF	400	500	720	QSZ13-G2	6	130*163	13	28	201	3150*1360*1800	3200
JHK-450GF	450	562.5	810	QSZ13-G3	6	130*163	13	28	201	3160*1360*1800	3300
重庆康明斯											
JHK-200GF	200	250	360	MTA11-G2	6	125*147	11	38	206	3000*1050*1700	2200
JHK-200GF	200	250	360	NT855-GA	6	140*152	14	38	206	3000*1050*1700	2600
JHK-250GF	250	312.5	450	NTA855-G1A	6	140*152	14	38	207	3100*1050*1700	2600
JHK-280GF	280	350	504	MTAA11-G3	6	125*147	11	38	210	3100*1050*1700	2700
JHK-280GF	280	350	504	NTA855-G1B	6	140*152	14	38	206	3100*1050*1700	2950
JHK-300GF	300	375	540	NTA855-G2A	6	140*152	14	38	206	3100*1100*1750	3000
JHK-320GF	320	400	576	NTA855-G4	6	140*152	14	38	205	3100*1150*1800	3100
JHK-320GF	320	400	576	QSNT-G3	6	140*152	14	38	205	3250*1200*1800	3100
JHK-350GF	350	437.5	630	NTAA855-G7A	6	140*152	14	38	205	3250*1200*1800	3500
JHK-400GF	400	500	720	KTA19-G3A	6	159*159	19	50	206	3500*1350*1800	3800
JHK-500GF	500	625	900	KTA19-G8	6	159*159	19	50	206	3500*1380*1800	4000
JHK-530GF	530	662.5	954	KTAA19-G6A	6	159*159	19	50	206	3500*1560*2100	4200
JHK-600GF	600	750	1080	KT38-GA	12	159*159	38	100	206	4350*1800*2350	7000
JHK-640GF	640	800	1152	KTA38-G2	12	159*159	38	100	206	4350*1800*2350	7500
JHK-700GF	700	875	1260	KTA38-G2B	12	159*159	38	100	206	4350*1800*2350	7500
JHK-800GF	800	1000	1440	KTA38-G2A	12	159*159	38	100	206	4350*1800*2350	7500
JHK-824GF	824	1030	1483	KTA38-G5	12	159*159	38	120	208	4320*1800*2350	8000
JHK-900GF	900	1125	1620	KTA38-G9	12	159*159	38	135	208	4450*1800*2350	8200
JHK-1000GF	1000	1250	1800	KTA38-G9	12	159*159	38	135	208	4450*1850*2350	8200
JHK-1100GF	1100	1375	1980	KTA50-G3	16	159*159	50	177	205	5000*2040*2430	9500
JHK-1200GF	1200	1500	2160	KTA50-G8	16	159*159	50	204	205	5350*2110*2500	10000
JHK-1200GF	1200	1500	2160	KTA50-GS8	16	159*159	50	204	205	5600*2150*2600	11000



### ■ 沃尔沃系列柴油发电机组

沃尔沃 (Volvo) 柴油发电机组属于环保型机组，排放标准达到欧盟二号或三号及EPA环保标准，发动机选用久负盛名的瑞典沃尔沃集团生产的电子喷射柴油发动机。沃尔沃公司始创于1927年，长期以来，他闪亮的品牌一直与它的三个核心价值观—质量、安全、环保紧密相联系在一起。沃尔沃 (Volvo) 柴油发电机组特点：冷启动特性好、加载能力强、体积小、耗油低、寿命长。

### ■ Volvo series

Volvo series diesel generator set are environmentally friendly, and the emission situation achieve European Union 2 or 3 and EPA environmental standards, which selects electronic injection diesel engines prestigious from Sweden Volvo group production. Volvo company is founded in 1927, that shining brand is closely associated with its three core values - quality, safety, environmental protection. Volvo diesel generator set features: cold starting, strong loading capability, small volume, low fuel consumption, long service life.



#### 标准配置 Standard equipment

- 发动机  
Diesel engine
- 启动免维护蓄电池及蓄电池连接线  
Starting batteries and battery connect wires
- 40°C散热水箱  
40°C water cooled radiator
- 工业消音器、波纹管  
Silencer and flexible exhaust hose
- 发电机  
Alternator
- 输出断路器  
Output circuit breaker
- 智能控制屏  
Digital control panel
- 钢式底座  
Steel base frame

#### 可选配置 Optional equipment

- 静音箱  
Sound proof
- 全自动控制系统  
ATS
- 50°C散热水箱  
50°C water cooled radiator
- 水套加热器  
Water heater
- 自动并机控制系统  
Automatic parallel synchronizing control system

### ■ 沃尔沃系列发电机组技术参数 Volvo generator technical parameters

机组型号 Model	功率Power KW	电流A KVA	电流A Current	发动机型号 Engine model	缸数 Cylinder	缸径*行程 Bore*Stroke	排气量L Displacement	机油容量L Lube oil	油耗g/kw.h Consumption	尺寸mm Size	重量Kg Weight
JHV-80GF	80	100	144	TAD530GE	4	108*130	4.76	13	213	2100*700*1450	1030
JHV-90GF	90	112.5	162	TAD531GE	4	108*130	4.76	13	214	2100*800*1450	1150
JHV-112GF	112	140	201.6	TAD532GE	4	108*130	4.76	15	214	2200*900*1500	1200
JHV-128GF	128	160	230.4	TAD731GE	6	108*130	7.15	20	215	2500*1020*1450	1500
JHV-160GF	160	200	288	TAD732GE	6	108*130	7.15	34	213	2520*1060*1530	1700
JHV-180GF	180	225	324	TAD733GE	6	108*130	7.15	34	216	2550*1060*1530	1800
JHV-200GF	200	250	360	TAD734GE	6	108*130	7.15	29	204	2600*1100*1530	1950
JHV-220GF	220	275	396	TAD734GE	6	108*130	7.15	29	204	2600*1100*1530	1950
JHV-280GF	280	350	504	TAD1341GE	6	131*158	12.78	35	198	3100*1150*1600	2550
JHV-300GF	300	375	540	TAD1342GE	6	131*158	12.78	35	198	3100*1150*1600	2850
JHV-320GF	300	375	540	TAD1343GE	6	131*158	12.78	35	198	3100*1150*1600	2950
JHV-350GF	350	437.5	630	TAD1344GE	6	131*158	12.78	35	199	3100*1150*1600	3050
JHV-400GF	400	500	720	TAD1345GE	6	131*158	12.78	35	200	3200*1150*1800	3400
JHV-440GF	440	550	792	TAD1641GE	6	144*165	16.12	48	199	3300*1400*1950	3400
JHV-480GF	480	600	864	TAD1642GE	6	144*165	16.12	48	201	3300*1400*1950	3500
JHV-500GF	500	625	900	TWD1643GE	6	144*165	16.12	48	199	3350*1400*1950	3600
JHV-550GF	550	687.5	990	TWD1643GE	6	144*165	16.12	48	199	3400*1400*2000	3800

以上技术参数转速为1500RPM，频率50Hz，额定电压400/230V，功率因数0.8，接线方式为3相4线。60Hz发电机组可以根据客户的特殊需要定制。发电机可以根据客户要求，选用无锡斯坦福、上海马拉松、上海恒声等知名品牌。本参数表仅供参考，如有更改恕不另行通知。

The parameters above is about: rotating speed 1500RPM, frequency 50Hz, rated voltage 400/230V, power factor 0.8, three phase four line of wiring mode. 60Hz can be customized. We have Stamford, Marathon, Hengsheng and other famous brands alternator for your choice. This parameter table is only for reference and no notice any more if have change in the future.



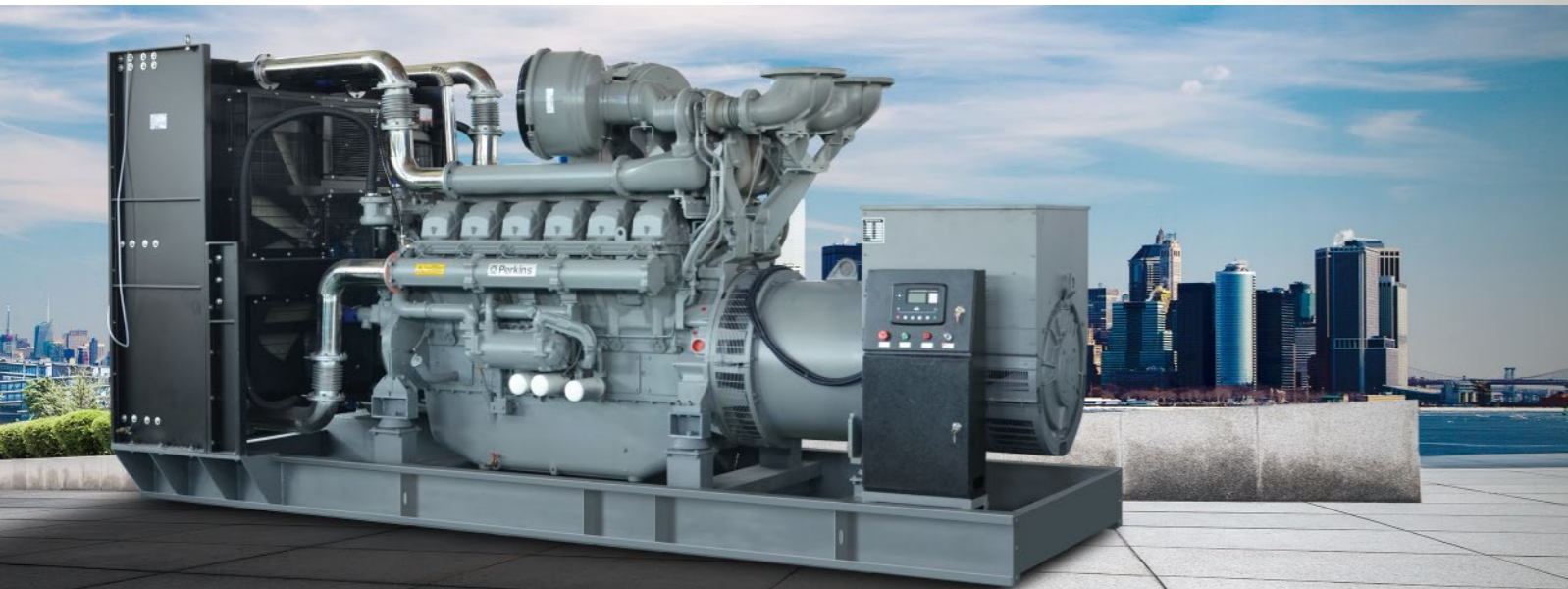


### ■ 帕金斯系列柴油发电机组

英国帕金斯（又称劳斯莱斯）发动机有限公司是世界最大的发动机制造商之一，创立于1932年，年产量近40万台发动机。1998年，帕金斯被美国克莱斯勒公司控股，成为卡特集团一成员。帕金斯以飞快的速度为广大客户所接受，并迅速占领一部分市场份额，在发电机组市场上取得了令人瞩目的成就。帕金斯柴油发电机组规格全，品种多、结构紧凑、性能稳定可靠、一般维护保养易行、废气排放污染低达到欧三环保排放标准。

### ■ Perkins series

British perkins (also called Rolls-Royce) engine Co.,Ltd is one of the world's largest engine manufacturer, was founded in 1932, the annual output nearly 400,000 engines. In 1998, perkins was the US Chrysler holdings, becoming a member of Caterpillar Inc. Perkins engine gained remarkable achievement in generator market. Perkins diesel generator set have complete specification, compact structure, reliable performance, easy general maintenance and exhaust emission meet European Union three environmental emissions standards.



#### 标准配置 Standard equipment

- 发动机  
Diesel engine
- 启动免维护蓄电池及蓄电池连接线  
Starting batteries and battery connect wires
- 40°C散热水箱  
40°C water cooled radiator
- 工业消音器、波纹管  
Silencer and flexible exhaust hose
- 发电机  
Alternator
- 输出断路器  
Output circuit breaker
- 智能控制屏  
Digital control panel
- 钢式底架  
Steel base frame

#### 可选配置 Optional equipment

- 静音箱  
Sound proof
- 全自动控制系统  
ATS
- 50°C散热水箱  
50°C water cooled radiator
- 水套加热器  
Water heater
- 自动并机控制系统  
Automatic parallel synchronizing control system

### ■ 帕金斯系列发电机组技术参数

Perkins marine generator technical parameters

机组型号 Model	功率Power KW	电流A KVA	电流A Current	发动机型号 Engine model	缸数 Cylinder	缸径*行程 Bore*Stroke	排气量L Displacement	机油容量L Lube oil	油耗g/kw.h Consumption	尺寸mm Size	重量Kg Weight
JHP-7GF	7	8.75	12.6	403A-11G1	3	77*81	1.13	4.9	248	1200*700*1100	300
JHP-8GF	8	10	14.4	403D-11G	3	77*81	1.13	4.9	252	1200*700*1100	300
JHP-10GF	10	12.5	18	403D-15G	3	84*90	1.49	6	248	1250*700*1100	350
JHP-11GF	11	13.75	19.8	403A-15G1	3	84*90	1.49	6.5	248	1250*700*1100	350
JHP-12GF	12	15	21.6	403A-15G2	3	84*90	1.49	6	250	1250*700*1100	350
JHP-16GF	16	20	28.8	404A-22G1	4	84*100	2.2	10.6	237	1500*710*1100	500
JHP-16GF	16	20	28.8	404D-22G	4	84*100	2.2	10.6	237	1500*710*1100	500
JHP-24GF	24	30	43.2	1103A-33G	3	105*127	3.3	7.9	211	1500*750*1100	800
JHP-36GF	36	45	64.8	1103A-33TG1	3	105*127	3.3	7.9	211	1550*750*1180	920
JHP-50GF	50	62.5	90	1103A-33TG2	3	105*127	3.3	7.9	215	1550*750*1180	1050
JHP-50GF	50	62.5	90	1104A-44TG1	4	105*127	4.4	8	208	1800*750*1180	1100
JHP-64GF	64	80	115.2	1104A-44TG2	4	105*127	4.4	8	208	1850*780*1200	1150
JHP-64GF	64	80	115.2	1104C-44TAG1	4	105*127	4.4	8	211	1850*780*1200	1250
JHP-80GF	80	100	144	1104C-44TAG2	4	105*127	4.4	8	205	1950*800*1200	1250
JHP-80GF	80	100	144	1104D-E44TAG2	4	105*127	4.4	8	216	1950*800*1200	1250
JHP-110GF	110	137.5	198	1106A-70TG1	6	105*135	7.01	18	199	2500*950*1450	1350
JHP-120GF	120	150	216	1106A-70TAG2	6	105*135	7.01	16.5	208	2600*950*1450	1450
JHP-140GF	140	175	252	1106A-70TAG3	6	105*135	7.01	16.5	206	2700*950*1450	1700
JHP-160GF	160	200	288	1106A-70TAG4	6	105*135	7.01	16.5	220	2800*950*1450	2100
JHP-160GF	160	200	288	1506A-E88TAG1	6	112*149	8.8	41	200	3000*1000*1700	2100
JHP-180GF	180	225	324	1506A-E88TAG2	6	112*149	8.8	41	200	3000*1000*1700	2100
JHP-200GF	200	250	360	1506A-E88TAG3	6	112*149	8.8	41	200	3100*1000*1700	2150
JHP-240GF	240	300	432	1506A-E88TAG5	6	112*149	8.8	41	198	3100*1000*1700	2150
JHP-280GF	280	350	504	2206C-E13TAG2	6	130*157	12.5	40	209	3250*1200*2000	3200
JHP-320GF	320	400	576	2206C-E13TAG3	6	130*157	12.5	40	206	3350*1200*2000	3300
JHP-360GF	360	450	648	2506C-E15TAG1	6	137*171	15.2	62	216	3450*1200*2050	3500
JHP-400GF	400	500	720	2506C-E15TAG2	6	137*171	15.2	62	211	3450*1200*2100	3760
JHP-480GF	480	600	864	2806C-E18TAG1A	6	145*183	18.1	62	216	4100*1600*2200	4600
JHP-520GF	520	650	936	2806A-E18TAG2	6	145*183	18.1	62	202	4200*1600*2200	4800
JHP-600GF	600	750	1080	4006-23TAG2A	6	160*190	22.9	113	202	4500*1800*2300	5500
JHP-640GF	640	800	1152	4006-23TAG3A	6	160*190	22.9	113	210	4600*1800*2300	5500
JHP-720GF	720	900	1296	4008TAG1A	8	160*190	30.5	153	206	4800*2100*2500	7700
JHP-800GF	800	1000	1440	4008TAG2A	8	160*190	30.5	153	214	4900*2100*2500	8000
JHP-900GF	900	1125	1620	4008TAG2	8	160*190	30.5	165	202	4900*2100*2500	8000
JHP-1000GF	1000	1250	1800	4012-46TWG2A	12	160*190	45.8	177	212	4950*2200*2550	8500
JHP-1100GF	1100	1375	1980	4012-46TWG3A	12	160*190	45.8	177	212	4950*2200*2550	8700
JHP-1200GF	1200	1500	2160	4012-46TAG2A	12	160*190	45.8	177	200	5050*2200*2550	9100
JHP-1360GF	1360	1700	2448	4012-46TAG3A	12	160*190	45.8	177	208	5050*2200*2550	9500
JHP-1480GF	1480	1850	2664	4016TAG1A	16	160*190	61.1	237	205	5700*2800*3100	13500
JHP-1480GF	1480	1850	2664	4016-61TRG1	16	160*190	61.1	237	201	5700*2800*3100	13500
JHP-1600GF	1600	2000	2880	4016TAG2A	16	160*190	61.1	237	209	5800*2800*3100	14000
JHP-1600GF	1600	2000	2880	4016-61TRG2	16	160*190	61.1	237	205	5800*2800*3100	14000
JHP-1800GF	1800	2250	3240	4016-61TRG3	16	160*190	61.1	237	205	5900*2800*3100	15700

### ■ MTU系列柴油发电机组

发动机及涡轮机联盟弗里德希哈芬股份有限公司，简称：MTU公司。MTU为戴姆勒-奔驰集团属下公司，是世界领先的柴油发动机制造商。其领先的技术、高可靠性的产品以及一流的售后服务，在世界范围内享有盛誉。其柴油发动机功率从35kw-9000kw，广泛用于舰船、重型汽车和工程机械、铁路机车。

### ■ MTU series

Motoren-und Turbinen-Union Friedrichshafen GmbH, MTU, is one of the Daimler-Benz Group companies, and the world's leading manufacturers of diesel engine. It has good reputation all over the world with its leading-edge technology, high quality products and excellent after-sales service. The power range of diesel engine is from 35kw to 9500kw. MTU series diesel gensets are widely used in the naval ships, heavy duty truck, construction machinery and railway locomotive.



#### 标准配置 Standard equipment

- 发动机  
Diesel engine
- 启动免维护蓄电池及蓄电池连接线  
Starting batteries and battery connect wires
- 40°C散热水箱  
40°C water cooled radiator
- 工业消音器、波纹管  
Silencer and flexible exhaust hose
- 发电机  
Alternator
- 输出断路器  
Output circuit breaker
- 智能控制屏  
Digital control panel
- 钢式底座  
Steel base frame

#### 可选配置 Optional equipment

- 静音箱  
Sound proof
- 全自动控制系统  
ATS
- 50°C散热水箱  
50°C water cooled radiator
- 水套加热器  
Water heater
- 自动并机控制系统  
Automatic parallel synchronizing control system

### ■ MTU系列发电机组技术参数

MTU generator technical parameters

机组型号 Model	功率Power KW	电流A KVA	电流A Current	发动机型号 Engine model	缸数 Cylinder	缸径*行程 Bore*Stroke	排气量L Displacement	机油容量L Lube oil	油耗g/kw.h Consumption	尺寸mm Size	重量Kg Weight
MTU 1600系列											
JHM-220GF	220	275	396	6R1600G10F	6	122*150	10.5	43	201	2800*1150*1650	2500
JHM-250GF	250	312.5	450	6R1600G20F	6	122*150	10.5	46	199	2800*1150*1650	2900
JHM-300GF	300	375	540	8V1600G10F	8	122*150	14	46	191	2840*1660*1975	3250
JHM-320GF	320	400	576	8V1600G20F	8	122*150	14	46	190	2840*1660*1975	3250
JHM-360GF	360	450	648	10V1600G10F	10	122*150	17.5	61	191	3230*1660*2040	3800
JHM-400GF	400	500	720	10V1600G20F	10	122*150	17.5	61	190	3320*1350*1850	4000
JHM-480GF	480	600	864	12V1600G10F	12	122*150	21	73	195	3300*1400*1970	3900
JHM-500GF	500	625	900	12V1600G20F	12	122*150	21	73	195	3400*1350*1850	4410
MTU 2000系列											
JHM-550GF	550	687.5	990	12V2000G25	12	130*150	23.88	77	197	4000*1650*2280	6500
JHM-630GF	630	787.5	1134	12V2000G65	12	130*150	23.88	77	202	4200*1650*2280	7000
JHM-800GF	800	1000	1440	16V2000G25	16	130*150	31.84	102	198	4500*2000*2300	7800
JHM-880GF	880	1100	1584	16V2000G65	16	130*150	31.84	102	198	4500*2000*2300	7800
JHM-1000GF	1000	1250	1800	18V2000G65	18	130*150	35.82	130	202	4700*2000*2380	9000
JHM-1100GF	1100	1375	1980	18V2000G26F	18	130*150	35.82	130	202	4700*2000*2380	9000
MTU 4000系列											
JHM-1200GF	1200	1500	2160	12V4000G23R	12	170*210	57.2	260	195	5000*1800*2400	12000
JHM-1400GF	1400	1750	2520	12V4000G23	12	170*210	57.2	260	189	5000*1800*2400	13000
JHM-1500GF	1500	1875	2700	12V4000G63	12	170*210	57.2	260	193	5100*1800*2400	14000
JHM-1760GF	1760	2200	3168	16V4000G23	16	170*210	76.3	300	192	5500*2220*2660	17000
JHM-1900GF	1900	2375	3420	16V4000G63	16	170*210	76.3	300	191	5500*2220*2660	17500
JHM-2200GF	2200	2750	3960	20V4000G23	20	170*210	95.4	390	195	8300*2950*2550	24000
JHM-2400GF	2400	3000	4320	20V4000G63	20	170*210	95.4	390	193	8300*2950*2550	24500
JHM-2500GF	2500	3125	4500	20V4000G63L	20	170*210	95.4	390	192	8300*2950*2550	25000

以上技术参数转速为1500RPM，频率50Hz，额定电压400/230V，功率因数0.8，接线方式为3相4线。60Hz发电机组可以根据客户的特殊需要定制。发电机可以根据客户需要，选用无锡斯坦福、上海马拉松、上海恒声等知名品牌。本参数表仅供参考，如有更改恕不另行通知。

The parameters above is about: rotating speed 1500RPM, frequency 50Hz, rated voltage 400/230V, power factor 0.8, three phase four line of wiring mode. 60Hz can be customized. We have Stamford, Marathon, Hengsheng and other famous brands alternator for your choice. This parameter table is only for reference and no notice any more if have change in the future.



### 斗山系列柴油发电机组

韩国斗山柴油发电机组用发动机均满足美国EPA认证，功率范围从35KW-649KW，海拔不超过1000米，环境温度为40°C时可持续输出功率。

斗山发动机既经济、安装又简便，排放低，噪音小。最新的喷射和空气压缩技术在保障燃烧性能的同时，降低了油耗。斗山采用活塞冷却系统，非常好的控制了汽缸和燃烧室的工作温度，提升了发动机的使用寿命。

### Doosan series

Doosan all diesel engine can meet the US EPA emission standards, the power range is from 35kW to 649kW. The output power can be maintained under the condition of atmospheric temperature is 40 °C and at the height of 1000m.Tropics cooling system (to 50 °C).

Low emission, low noise. The latest technology and compressed air injection system brings low internal friction and guarantee excellent combustion performance and low fuel consumption.



#### 标准配置 Standard equipment

- 发动机  
Diesel engine
- 启动免维护蓄电池及蓄电池连接线  
Starting batteries and battery connect wires
- 40°C散热水箱  
40°Cwater cooled radiator
- 工业消音器、波纹管  
Silencer and flexible exhaust hose
- 发电机  
Alternator
- 输出断路器  
Output circuit breaker
- 智能控制屏  
Digital control panel
- 钢式底架  
Steel base frame

#### 可选配置 Optional equipment

- 静音箱  
Sound proof
- 全自动控制系统  
ATS
- 50°C散热水箱  
50°Cwater cooled radiator
- 水套加热器  
Water heater
- 自动并机控制系统  
Automatic parallel synchronizing control system

### 斗山系列发电机组技术参数

Doosan generator technical parameters

机组型号 Model	功率Power KW	电流A KVA	电流A Current	发动机型号 Engine model	缸数 Cylinder	缸径*行程 Bore*Stroke	排气量L Displacement	机油容量L Lube oil	油耗g/kw.h Consumption	尺寸mm Size	重量Kg Weight
JHD-7GF	7	8.75	12.6	SP103N A/H	3	75*76	1.01	3.8	245	1200*700*1050	600
JHD-12GF	12	15	21.6	SP173N A/D	3	87*92	1.6	5.8	236	1350*700*1050	650
JHD-15GF	15	18.75	27	SP224N A/C	4	87*92	2.2	8	220	1500*750*1150	700
JHD-20GF	20	25	36	SP244T A/C	4	87*102	2.4	9.7	220	1600*800*1200	780
JHD-120GF	120	150	216	DP086TA	6	111*139	8.1	18	201	2300*800*1500	1600
JHD-132GF	132	165	237.6	DP086TA	6	111*139	8.1	18	201	2300*800*1500	1600
JHD-150GF	150	187.5	270	P086TI-1	6	111*139	8.1	18	207	2550*1000*1500	1750
JHD-180GF	180	225	324	P086TI	6	111*139	8.1	18	202	2600*1000*1500	1800
JHD-200GF	200	250	360	DP086LA	6	111*139	8.1	20	203	2700*1000*1500	1800
JHD-220GF	220	275	396	P126TI	6	123*155	11.1	20	205	2900*1050*1650	2400
JHD-240GF	240	300	432	P126TI	6	123*155	11.1	20	205	2900*1050*1650	2400
JHD-260GF	260	325	468	P126TI-II	6	123*155	11.1	25	202	3000*1050*1650	2600
JHD-300GF	300	375	540	P158LE-1	8	128*142	14.6	33	232	3100*1400*1850	2700
JHD-320GF	320	400	576	P158LE-1	8	128*142	14.6	33	232	3100*1400*1850	2700
JHD-350GF	350	437.5	630	P158LE	8	128*142	14.6	33	209	3100*1400*1850	2800
JHD-400GF	400	500	720	DP158LCF	8	128*142	14.6	35	210	3120*1400*1850	3000
JHD-440GF	440	550	792	DP158LDF	8	128*142	14.6	40	205	3300*1400*1850	3300
JHD-500GF	500	625	900	DP180LAF	10	128*142	18.3	45	200	3400*1400*1850	3500
JHD-550GF	550	687.5	990	DP180LBF	10	128*142	18.3	45	207	3400*1400*1850	3700
JHD-600GF	600	750	1080	DP222LBF	12	128*142	21.9	45	210	3500*1400*1850	4000
JHD-650GF	650	812.5	1170	DP222LCF	12	128*142	21.9	50	207	3600*1400*1850	4500

以上技术参数转速为1500RPM，频率50Hz，额定电压400/230V，功率因数0.8，接线方式为3相4线。60Hz发电机组可以根据客户的特殊需要定制。发电机可以根据客户要求，选用无锡斯坦福、上海马拉松、上海恒声等知名品牌。本参数表仅供参考，如有更改恕不另行通知。

The parameters above is about: rotating speed 1500RPM, frequency 50Hz, rated voltage 400/230V, power factor 0.8, three phase four line of wiring mode. 60Hz can be customized. We have Stamford, Marathon, Hengsheng and other famous brands alternator for yuor choice. This parameter table is only for reference and no notice any more if have change in the future.



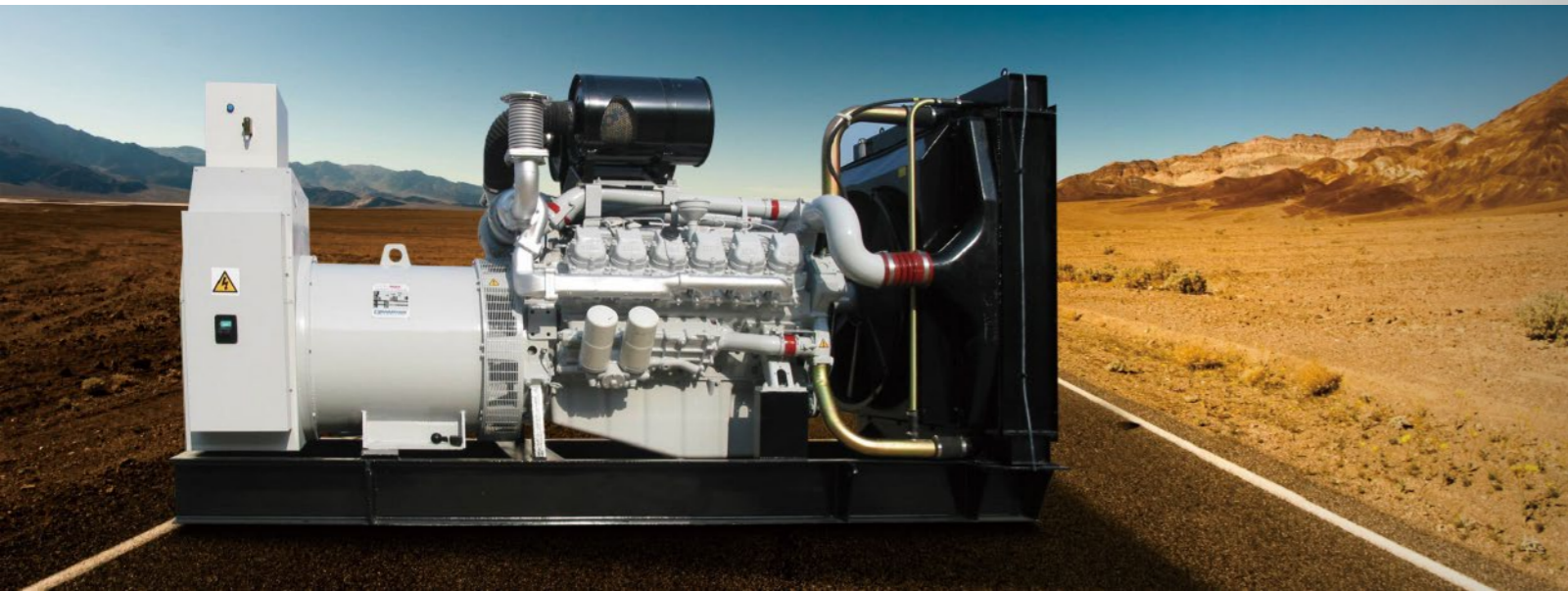


■ 韩国科曼系列柴油发电机组

科曼 (Korman) 发动机产于易恩吉动力有限公司，是一家专业的发动机制造厂家，成立于韩国，提供全球化销售及售后服务。科曼不仅能设计，制造出功率从10KW-2000KW柴油发动机，而且也能提供优秀的全球售后服务。

■ Korman series

Korman series diesel engines are produced by ENG power Co.,Ltd,which is a professional engine manufacture founded in Korea,and provide global sales&service.Korman not only can produce the diesel engine power from 10kw to 2000kw,but also it can provide the excellent global after-sales service.



标准配置 Standard equipment

- 发动机  
Diesel engine
- 启动免维护蓄电池及蓄电池连接线  
Starting batteries and battery connect wires
- 40°C散热水箱  
40°Cwater cooled radiator
- 工业消音器、波纹管  
Silencer and flexible exhaust hose
- 发电机  
Alternator
- 输出断路器  
Output circuit breaker
- 智能控制屏  
Digital control panel
- 钢式底座  
Steel base frame

可选配置 Optional equipment

- 静音箱  
Sound proof
- 全自动控制系统  
ATS
- 50°C散热水箱  
50°Cwater cooled radiator
- 水套加热器  
Water heater
- 自动并机控制系统  
Automatic parallel synchronizing control system

■ 韩国科曼系列发电机组技术参数  
Korman generator technical parameters

机组型号 Model	功率Power KW	电流A KVA	电流A Current	发动机型号 Engine model	缸数 Cylinder	缸径*行程 Bore*Stroke	排气量L Displacement	机油容量L Lube oil	油耗g/kw.h Consumption	尺寸mm Size	重量Kg Weight
JHKM-10GF	10	12.5	18	3KMY-15	3	85*90	1.53	5.3	260	1200*700*1100	400
JHKM-15GF	15	18.75	27	4KMY-20	4	85*95	2.15	5.5	230	1500*700*1300	500
JHKM-20GF	20	25	36	4KMY-30	4	90*105	2.67	7.6	230	1700*750*1300	800
JHKM-26GF	25	31.25	45	4KMY-35	4	90*105	2.97	7.6	225	1700*750*1300	800
JHKM-30GF	30	37.5	54	4KMY-40	4	102*118	3.87	10.46	220	1800*750*1380	920
JHKM-35GF	35	43.75	63	4KMY-48	4	105*118	4.1	10.46	220	1800*750*1380	920
JHKM-40GF	40	50	72	4KMY-60	4	102*118	3.87	10.46	220	1800*780*1380	950
JHKM-50GF	50	62.5	90	4KMD-75	4	108*120	4.39	14	225	1800*780*1380	950
JHKM-80GF	80	100	144	4KMD-110	4	110*125	4.75	14	225	1800*780*1380	950
JHKM-90GF	90	112.5	162	6KMD-115	6	105*125	6.49	16	225	2200*800*1600	1250
JHKM-100GF	100	125	180	6KMD-140	6	105*125	6.49	16	225	2200*800*1600	1350
JHKM-120GF	120	150	216	6KMD-150	6	105*125	6.49	16	225	2200*800*1600	1450
JHKM-140GF	140	175	252	6KMD-180	6	110*125	7.12	16	210	2250*850*1650	1500
JHKM-160GF	160	200	288	6KMD-235	6	120*130	8.82	23	198	2600*1000*1700	2200
JHKM-200GF	200	250	360	6KMD-275	6	126*130	9.72	16	198	2600*1000*1700	2200
JHKM-250GF	250	312.5	450	6KMD-320	6	126*130	9.72	23	198	3100*1000*1700	2250
JHKM-280GF	280	350	504	6KMD-365	6	126*155	11.59	24	198	3500*1200*2000	3000
JHKM-300GF	300	375	540	8KMY-415	8	128*142	14.6	21	198	3650*1200*2000	3100
JHKM-320GF	320	400	576	8KMY-455	8	128*142	14.6	21	198	3650*1200*2000	3300
JHKM-400GF	400	500	720	8KMY-505	8	128*142	14.6	21	198	3990*1300*2100	3760
JHKM-440GF	440	550	792	8KMY-530	8	128*142	14.6	21	198	4100*1500*2200	4100
JHKM-500GF	500	625	900	12KMY-645	12	128*142	21.93	40	198	4300*1600*2200	4500
JHKM-520GF	520	650	936	12KMY-670	12	128*142	21.93	40	198	4300*1650*2200	4800
JHKM-550GF	550	687.5	990	12KMY-695	12	128*142	21.93	40	198	4300*1650*2200	5000
JHKM-600GF	600	750	1080	12KMY-790	12	128*142	21.93	40	198	4500*1800*2300	5500
JHKM-620GF	620	775	1116	12KMY-825	12	128*142	21.93	40	198	4600*1800*2300	6000
JHKM-700GF	700	875	1260	16KMY-880	16	128*142	29.24	40	198	4800*2100*2500	7700
JHKM-720GF	720	900	1296	16KMY-995	16	128*142	29.24	40	198	4800*2100*2500	7700
JHKM-800GF	800	1000	1440	16KMY-1090	16	128*142	29.24	40	198	4900*2100*2500	8000
JHKM-900GF	900	1125	1620	16KMY-1160	16	128*142	29.24	40	198	5000*2100*2500	8100
JHKM-1000GF	1000	1250	1800	12KMG-1390	12	170*195	53.1	180	208	5300*2200*2600	10000
JHKM-1200GF	1200	1500	2160	12KMG-1665	12	170*195	53.1	180	208	5400*2200*2600	11000
JHKM-1400GF	1400	1750	2520	12KMG-1870	12	170*195	53.1	180	208	5500*2200*2650	12000
JHKM-1600GF	1600	2000	2880	16KMG-2220	16	170*195	70.8	240	208	5900*2800*3100	14000
JHKM-2000GF	2000	2500	3600	16KMG-2500	16	170*195	70.8	240	208	6100*2800*3100	15700

以上技术参数转速为1500RPM，频率50Hz，额定电压400/230V，功率因数0.8，接线方式为3相4线。60Hz发电机组可以根据客户的特殊需要定制。发电机可以根据客户要求，选用无锡斯坦福、上海马拉松、上海恒声等知名品牌。本参数表仅供参考，如有更改恕不另行通知。

The parameters above is about: rotating speed 1500RPM, frequency 50Hz, rated voltage 400/230V, power factor 0.8, three phase four line of wiring mode. 60Hz can be customized. We have Stamford, Marathon, Hengsheng and other famous brands alternator for yuor choice. This parameter table is only for reference and no notice any more if have change in the future.

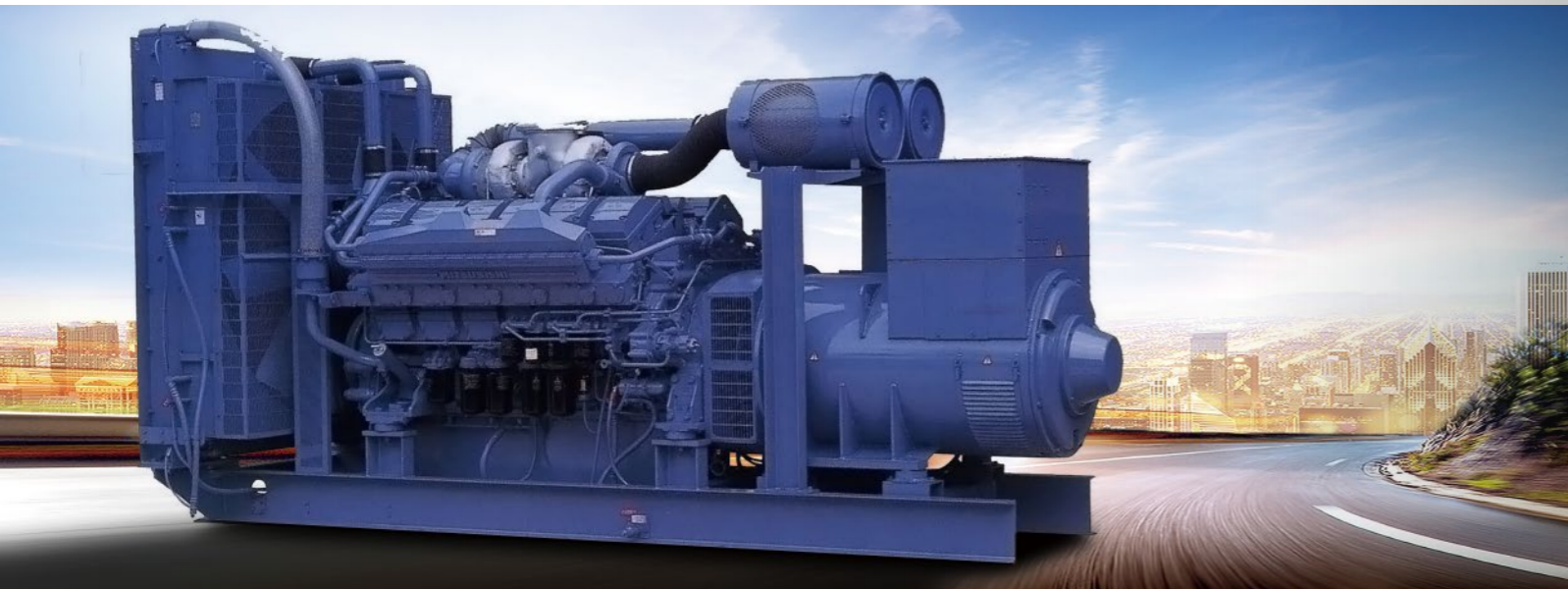


### ■ 三菱系列柴油发电机组

三菱系列柴油发电机组能够在严峻的环境条件下耐久工作，耐久性及可靠性为业界公认，其结构紧凑、燃油消耗低、大修周期长。产品符合ISO8528、IEC国际标准及J.I.S日本工业标准。功率范围500KW-1600KW，该产品性能可靠，品质优秀，可满足国内外中高端用户的需求。

### ■ Mitsubishi series

Mitsubishi diesel generators can work in tough environmental conditions, durability and reliability of which are recognized by the industry, such as compact structure, low fuel consumption, overhaul cycle. Mitsubishi diesel generators meet ISO8528, IEC international standards and J.I.S Japanese industry standards. Reliable performance and excellent quality meet the needs of domestic and foreign high-end customers.



#### 标准配置 Standard equipment

- 发动机  
Diesel engine
- 启动免维护蓄电池及蓄电池连接线  
Starting batteries and battery connect wires
- 40°C散热水箱  
40°C water cooled radiator
- 工业消音器、波纹管  
Silencer and flexible exhaust hose
- 发电机  
Alternator
- 输出断路器  
Output circuit breaker
- 智能控制屏  
Digital control panel
- 钢式底座  
Steel base frame

#### 可选配置 Optional equipment

- 静音箱  
Sound proof
- 全自动控制系统  
ATS
- 50°C散热水箱  
50°C water cooled radiator
- 水套加热器  
Water heater
- 自动并机控制系统  
Automatic parallel synchronizing control system

### ■ 三菱系列发电机组技术参数

Mitsubishi generator technical parameters

机组型号 Model	功率Power KW	KVA	电流A Current	发动机型号 Engine model	缸数 Cylinder	缸径*行程 Bore*Stroke	排气量L Displacement	机油容量L Lube oil	油耗g/kw.h Consumption	尺寸mm Size	重量Kg Weight
JHSL-480GF	480	600	864	S6R-PTA	6	170*180	24.5	24.5	196	3598×1614×2226	5000
JHSL-520GF	520	650	936	S6R2-PTA	6	170*220	30	30	196	3576×1614×2226	5100
JHSL-600GF	600	750	1080	S6R2-PTAA	6	170*220	30	30	196	4023×1810×1953	5750
JHSL-600GF	600	750	1080	S12A2-PTA	12	150*160	33.9	33.9	221	3996×1575×1959	6100
JHSL-800GF	800	1000	1440	S12H-PTA	12	150*175	37.1	37.1	206	4350×1756×2456	8200
JHSL-1000GF	1000	1250	1800	S12R-PTA	12	170*180	49	49	221	4650×2100×2600	9100
JHSL-1100GF	1100	1375	1980	S12R-PTA2	12	170*180	49	49	221	4595×2156×2700	9600
JHSL-1200GF	1200	1500	2160	S12R-PTAA2	12	170*180	49	49	209	4595×2156×2700	10000
JHSL-1300GF	1300	1625	2340	S16R-PTA	16	170*180	65.4	65.4	206	5382×2486×2931	11750
JHSL-1500GF	1500	1875	2700	S16R-PTA2	16	170*180	65.4	65.4	207	5382×2486×2931	12000
JHSL-1600GF	1600	2000	2880	S16R-PTAA2	16	170*180	65.4	65.4	206	5875×2392×3453	14400
JHSL-1800GF	1800	2250	3240	S16R2-PTAW	16	170*220	80	80	209	5985×2555×2775	17200

以上技术参数转速为1500RPM，频率50Hz，额定电压400/230V，功率因数0.8，接线方式为3相4线。60Hz发电机组可以根据客户的特殊需要定制。发电机可以根据客户要求，选用无锡斯坦福、上海马拉松、上海恒声等知名品牌。本参数表仅供参考，如有更改恕不另行通知。  
The parameters above is about: rotating speed 1500RPM, frequency 50Hz, rated voltage 400/230V, power factor 0.8, three phase four line of wiring mode. 60Hz can be customized. We have Stamford, Marathon, Hengsheng and other famous brands alternator for your choice. This parameter table is only for reference and no notice any more if have change in the future.







### ■ 上柴系列柴油发电机组

该系列发电机组采用上海柴油机股份有限公司生产H系列、D系列、E系列、G系列、W系列电站柴油机作为动力，配置名牌发电机。机组具有调压精度高、动态性能好、电压波形畸变小、效率高、工作可靠、使用寿命长、经济性能好等特点。机组配置全套免维护蓄电池启动系统，用户只需注入机油和冷却液、接通负极开关后即可启动机组，输出电力，极大提高了使用的便捷性。

### ■ SDEC series

SDEC Series diesel generator set adopt the H, D, E, G, W series diesel engine, which are made by Shanghai Diesel Engine Co., Ltd, and the famous alternators. The genset has the characteristics of high precision, high dynamic performance, low voltage waveform distortion, high efficiency, reliable operation, long service life and good economic performance. The genset is equipped with a maintenance-free battery start system. Users only need to inject oil and coolant. After turning on the negative switch, the users can start the unit and output the power, which greatly improves the convenience of the use.



#### 标准配置 Standard equipment

- 发动机  
Diesel engine
- 启动免维护蓄电池及蓄电池连接线  
Starting batteries and battery connect wires
- 40°C散热水箱  
40°C water cooled radiator
- 工业消音器、波纹管  
Silencer and flexible exhaust hose
- 发电机  
Alternator
- 输出断路器  
Output circuit breaker
- 智能控制屏  
Digital control panel
- 钢式底架  
Steel base frame

#### 可选配置 Optional equipment

- 静音箱  
Sound proof
- 全自动控制系统  
ATS
- 50°C散热水箱  
50°C water cooled radiator
- 水套加热器  
Water heater
- 自动并机控制系统  
Automatic parallel synchronizing control system

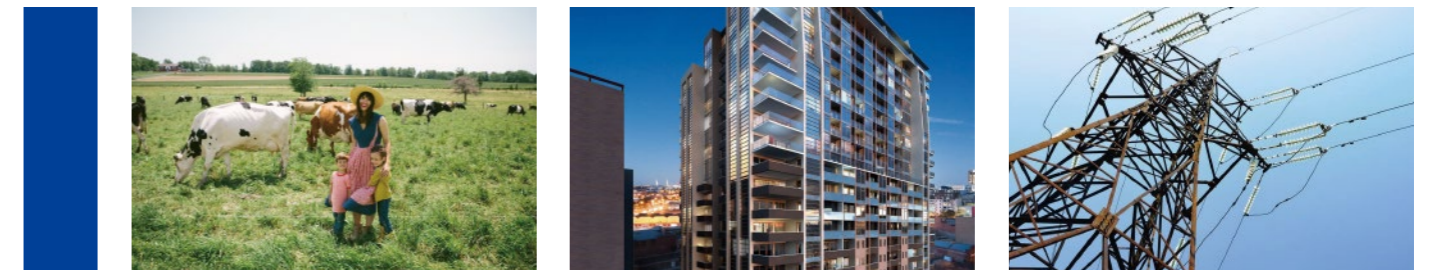
### ■ 上柴系列发电机组技术参数

SDEC generator technical parameters

机组型号 Model	功率Power KW	电流A KVA	电流A Current	发动机型号 Engine model	缸数 Cylinder	缸径*行程 Bore*Stroke	排气量L Displacement	机油容量L Lube oil	油耗g/kw.h Consumption	尺寸mm Size	重量Kg Weight
JHS-50GF	50	62.5	90	SC4H95D2	4	105*124	4.3	13	195	1900*800*1200	950
JHS-75GF	75	93.75	135	SC4H115D2	4	105*124	4.3	13	195	1900*860*1200	1000
JHS-100GF	100	125	180	SC4H160D2	4	105*124	4.3	13	195	2060*900*1200	1100
JHS-120GF	120	150	216	SC4H180D2	4	105*124	4.3	13	195	2100*900*1200	1350
JHS-150GF	150	187.5	270	SC7H230D2	6	105*124	6.5	17.5	195	2400*950*1450	1700
JHS-170GF	170	212.5	306	SC7H250D2	6	105*124	6.5	17.5	195	2600*950*1500	1800
JHS-180GF	180	225	324	SC8D280D2	6	114*135	8.3	19	200	2600*1050*1500	1800
JHS-200GF	200	250	360	SC9D310D2	6	114*144	8.9	19	200	2600*1050*1500	1850
JHS-220GF	220	275	396	SC9D340D2	6	114*144	8.9	25	198	3000*1150*1650	2500
JHS-250GF	250	312.5	450	SC13G355D2	6	135*150	12.88	41	205	3000*1150*1650	2550
JHS-280GF	250	312.5	450	SC13G420D2	6	135*150	12.88	41	225	3000*1150*1650	2550
JHS-300GF	300	375	540	SC12E460D2	6	128*153	11.8	41	192	3100*1150*1650	2650
JHS-320GF	320	400	576	SC15G500D2	6	135*165	14.2	41	205	3100*1250*1650	2700
JHS-350GF	350	437.5	630	SC15G500D2	6	135*165	14.2	41	205	3150*1250*1650	2800
JHS-400GF	400	500	720	SC25G610D2	12	135*150	25.8	65	205	3500*1500*1950	3900
JHS-450GF	450	562.5	810	SC25G690D2	12	135*150	25.8	65	205	3500*1500*1950	4000
JHS-500GF	500	625	900	SC27G755D2	12	135*155	26.6	65	205	3500*1500*2000	4200
JHS-550GF	550	687.5	990	SC27G830D2	12	135*155	26.6	65	205	3650*1500*2000	4300
JHS-600GF	600	750	1080	SC27G900D2	12	135*155	26.6	65	205	3700*1500*2150	4400
JHS-660GF	660	825	1188	SC33W990D2	6	180*215	32.8	75	205	4400*1700*2150	6500
JHS-800GF	800	1000	1440	SC33W1150D2	6	180*215	32.8	75	205	4500*1800*2350	6500

以上技术参数转速为1500RPM，频率50Hz，额定电压400/230V，功率因数0.8，接线方式为3相4线。60Hz发电机组可以根据客户的特殊需要定制。发电机可以根据客户需要，选用无锡斯坦福、上海马拉松、上海恒声等知名品牌。本参数表仅供参考，如有更改恕不另行通知。

The parameters above is about: rotating speed 1500RPM, frequency 50Hz, rated voltage 400/230V, power factor 0.8, three phase four line of wiring mode. 60Hz can be customized. We have Stamford, Marathon, Hengsheng and other famous brands alternator for your choice. This parameter table is only for reference and no notice any more if have change in the future.



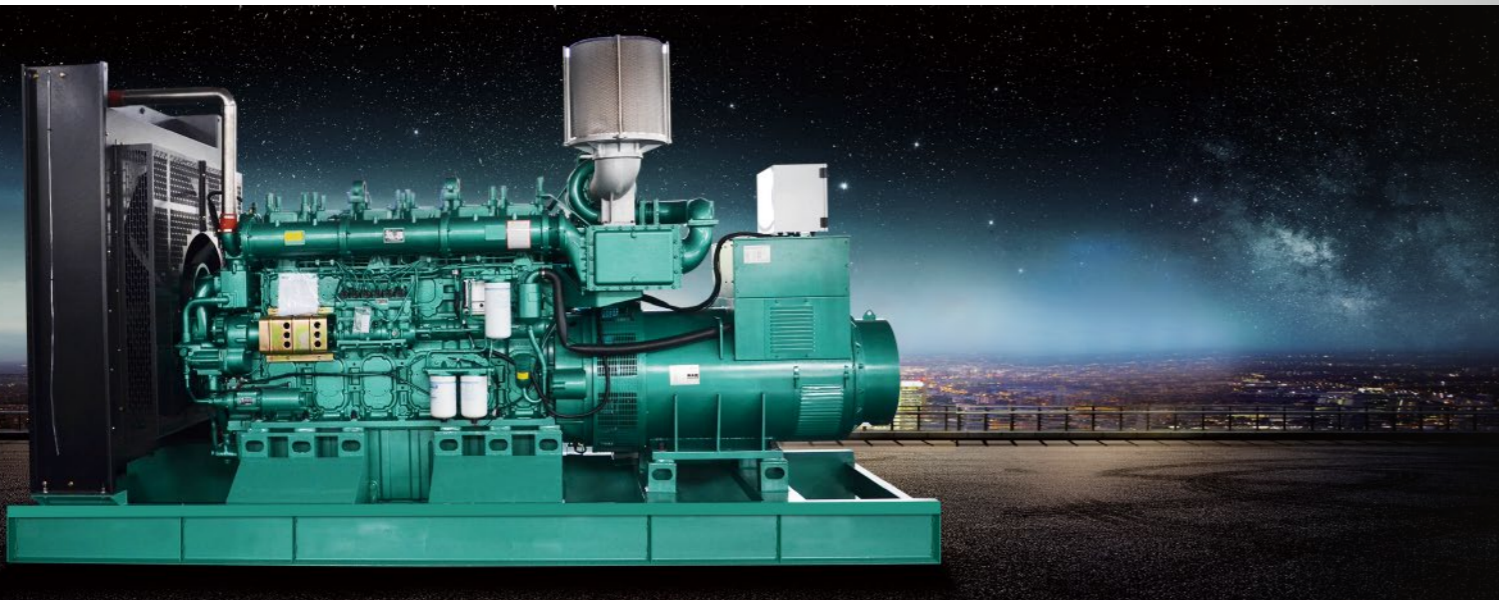


### 广西玉柴系列柴油发电机组

广西玉柴发动机是采用德国 FEV 技术所开发的产品。机体、气缸盖采用合金铸铁，强化程度高，采用整体锻钢曲轴，滑动轴承，体积小重量轻，可靠性高；大修期大于 12000 小时。该机组具有结构紧凑、功率储备大、可靠性高、调速性能好等特点。

### Yuchai series

Guangxi Yuchai diesel gen-sets is the series that produced by adopting the FEV technology from Germany. The machine body and cylinder are made of the high-strength alloy cast iron, fixed one-piece forged steel crankshaft, Which have sliding bearing, fine, light weight and reliable quality. The Yuchai diesel gen-sets have the great performance, compact structure, big power margin. normally the overhaul period must be after 12000 hours.



#### 标准配置 Standard equipment

- 发动机  
Diesel engine
- 启动免维护蓄电池及蓄电池连接线  
Starting batteries and battery connect wires
- 40°C 散热水箱  
40°C water cooled radiator
- 工业消音器、波纹管  
Silencer and flexible exhaust hose
- 发电机  
Alternator
- 输出断路器  
Output circuit breaker
- 智能控制屏  
Digital control panel
- 钢式底架  
Steel base frame

#### 可选配置 Optional equipment

- 静音箱  
Sound proof
- 全自动控制系统  
ATS
- 50°C 散热水箱  
50°C water cooled radiator
- 水套加热器  
Water heater
- 自动并机控制系统  
Automatic parallel synchronizing control system

### 广西玉柴系列发电机组技术参数 Yuchai generator technical parameters

机组型号 Model	功率Power KW	电流A KVA	电流A Current	发动机型号 Engine model	缸数 Cylinder	缸径*行程 Bore*Stroke	排气量L Displacement	机油容量L Lube oil	油耗g/kw.h Consumption	尺寸mm Size	重量Kg Weight
JHY-24GF	24	30	43.2	YC2115D	2	115*120	2.49	6.5	225	1500*750*1050	650
JHY-30GF	30	37.5	54	YC2115ZD	2	115*120	2.49	6.5	225	1500*800*1050	700
JHY-40GF	40	50	72	YCD4J12D-55	4	105*125	4.33	11	225	1800*800*1100	800
JHY-50GF	50	62.5	90	YCD4J22D-65	4	105*125	4.33	11	225	1800*800*1100	940
JHY-50GF	50	62.5	90	YC4D85Z-D20	4	108*115	4.21	11	230	1920*800*1100	950
JHY-60GF	60	75	108	YC4D90Z-D20	4	108*115	4.21	11	230	2000*800*1250	1100
JHY-90GF	90	112.5	162	YC6B135Z-D20	6	108*125	6.87	20	197	2250*800*1300	1300
JHY-100GF	100	125	180	YC6B155L-D21	6	108*125	6.87	20	196	2500*800*1250	1500
JHY-120GF	120	150	216	YC6B180L-D20	6	108*125	6.87	20	196	2500*830*1300	1600
JHY-132GF	132	165	237.6	YC6B205L-D20	6	108*125	6.87	20	196	2500*850*1300	1700
JHY-150GF	150	187.5	270	YC6A230L-D20	6	108*132	7.26	21	195	2550*900*1350	2100
JHY-160GF	160	200	288	YC6A245L-D21	6	108*132	7.26	21	195	2500*970*1500	2300
JHY-180GF	180	225	324	YC6MK285L-D20	6	123*145	10.33	28	195	3000*1030*1550	2600
JHY-200GF	200	250	360	YC6MK350L-D20	6	123*145	10.33	28	195	3000*1030*1580	2750
JHY-220GF	220	275	396	YC6MK350L-D20	6	123*145	10.33	28	195	3100*1100*1750	2800
JHY-250GF	250	312.5	450	YC6MK420L-D20	6	123*145	10.33	28	195	3000*1150*1750	3000
JHY-280GF	280	350	504	YC6MK420L-D20	6	123*145	10.33	28	195	3000*1150*1700	3000
JHY-300GF	300	375	540	YC6MJ480L-D20	6	131*145	11.73	28	215	3100*1150*1750	3100
JHY-320GF	320	400	576	YC6MJ480L-D20	6	131*145	11.73	28	215	3200*1200*1750	3100
JHY-350GF	350	437.5	630	YC6K520-D30	6	129*155	12.15	32	205	3300*1250*1850	3500
JHY-380GF	380	475	684	YC6K570-D30	6	129*165	12.94	32	205	3400*1250*1850	3600
JHY-400GF	400	500	720	YC6T600L-D22	6	145*165	16.35	52	195	3500*1350*1780	3900
JHY-440GF	440	550	792	YC6T660L-D20	6	145*165	16.35	52	195	3500*1500*1970	4000
JHY-500GF	500	625	900	YC6TD780L-D20	6	152*180	19.6	52	225	3580*1460*1830	4100
JHY-550GF	550	687.5	990	YC6TD840L-D20	6	152*180	19.6	52	225	3650*1600*2000	4200
JHY-600GF	600	750	1080	YC6TD900-D31	6	152*180	19.6	52	225	3750*1650*2000	4500
JHY-650GF	650	812.5	1170	YC6C1020-D31	6	200*210	39.58	180	220	4000*1500*2100	5500
JHY-700GF	700	875	1260	YC6C1070-D31	6	200*210	39.58	180	220	4200*1650*2100	5800
JHY-800GF	800	1000	1440	YC6C1220-D31	6	200*210	39.58	180	220	4600*1800*2600	8000
JHY-880GF	880	1100	1584	YC6C1320-D31	6	200*210	39.58	180	220	5200*2150*2600	8500
JHY-1000GF	1000	1250	1800	YC6C1520-D31	6	200*210	39.58	180	220	5200*2150*2600	9800
JHY-1100GF	1100	1375	1980	YC12VC1680-D31	12	200*210	79.17	280	210	5400*2150*2600	9900
JHY-1200GF	1200	1500	2160	YC12VC2070-D31	12	200*210	79.17	280	210	5400*2300*2600	9000
JHY-1320GF	1320	1650	2376	YC12VC2070-D31	12	200*210	79.17	280	210	5400*2300*2600	10000
JHY-1500GF	1500	1875	2700	YC12VC2270-D31	12	200*210	79.17	280	210	5600*2300*2600	12000
JHY-1600GF	1600	2000	2880	YC12VC2510-D31	12	200*210	79.17	280	210	5600*2300*2600	12500
JHY-1800GF	1800	2250	3240	YC12VC2700-D31	12	200*210	79.17	280	210	5650*2350*2600	13200
JHY-2000GF	2000	2500	3600	YC16VC3000-D31	16	200*210	105.6	430	196	7350*2670*2950	17500
JHY-2200GF	2200	2750	3960	YC16VC3300-D31	16	200*210	105.6	430	196	7350*2670*2950	17580
JHY-2400GF	2400	3000	4320	YC16VC3600-D31	16	200*210	105.6	430	196	7400*3100*3300	19200



### ■ 重庆科克系列柴油发电机组

科克是美国科克动力技术有限公司在中国投资的发动机项目，目前科克系列柴油发动机共有P、Q两大系列，发动机的功率输出范围为330-2750KW，缸径范围为：128-170mm，缸数为：6-20缸。科克发动机的使用领域为：发电机组、矿山机械、船舶动力及各种工业动力机械。

### ■ GOOGOL series

Chongqing Googol Engine-Tech Co.,Ltd is invested by Googol Power-Tech Co.,Ltd from USA,Googol series diesel engine have two series of P and Q. The output power is from 330kw to 2750kw.Cylinder bore is from 128mm to 170mm,Cylinder numbers is from 6 to 20.Googol generator have stable quality and is small in size but big in power,and it is of very strong competitiveness.



#### 标准配置 Standard equipment

- 发动机  
Diesel engine
- 启动免维护蓄电池及蓄电池连接线  
Starting batteries and battery connect wires
- 40°C散热水箱  
40°Cwater cooled radiator
- 工业消音器、波纹管  
Silencer and flexible exhaust hose
- 发电机  
Alternator
- 输出断路器  
Output circuit breaker
- 智能控制屏  
Digital control panel
- 钢式底架  
Steel base frame

#### 可选配置 Optional equipment

- 静音箱  
Sound proof
- 全自动控制系统  
ATS
- 50°C散热水箱  
50°Cwater cooled radiator
- 水套加热器  
Water heater
- 自动并机控制系统  
Automatic parallel synchronizing control system

### ■ 重庆科克系列发电机组技术参数 Googol generator technical parameters

机组型号 Model	功率Power KW	电流A KVA	发动机型号 Engine model	缸数 Cylinder	缸径*行程 Bore*Stroke	排气量L Displacement	机油容量L Lube oil	油耗g/kw.h Consumption	尺寸mm Size	重量Kg Weight	
JHKK-360GF	360	450	648	PTAA780G1	6	128*166	12.8	40	200	3000*1050*1430	2500
JHKK-400GF	400	500	720	PTAA780G3	6	128*166	12.8	40	200	3150*1050*1430	2600
JHKK-440GF	440	550	792	PTAA780G5	6	128*166	12.8	40	200	3150*1050*1430	2600
JHKK-440GF	440	550	792	PTAA890G1	8	128*142	14.6	28	207	3200*1100*1500	3000
JHKK-500GF	500	625	900	PTAA1120G1	10	128*142	18.2	34	211	3500*1400*1780	3400
JHKK-550GF	550	687.5	990	PTAA1120G3	10	128*142	18.2	34	211	3500*1400*1780	4000
JHKK-600GF	600	750	1080	PTAA1340G3	12	128*142	21.9	40	199	3600*1400*1800	4150
JHKK-660GF	660	825	1188	PTAA1340G5	12	128*142	21.9	40	199	3600*1400*1800	4150
JHKK-700GF	700	875	1260	PTAA1780G3	16	128*142	29.2	56	196	4500*1800*2100	6100
JHKK-800GF	800	1000	1440	PTAA1780G5	16	128*166	29.2	56	195	4500*1800*2100	6100
JHKK-880GF	880	1100	1584	PTAA1780G7	16	128*166	29.2	56	194	4500*1800*2100	6100
JHKK-880GF	880	1100	1584	QTA2160G1	8	170*195	35.4	160	200	4600*1900*2200	7350
JHKK-1000GF	1000	1250	1800	PTAA2230G1	20	128*142	36.5	60	193	5000*2100*2400	7300
JHKK-1100GF	1100	1375	1980	PTAA2230G3	20	128*142	36.5	60	193	5000*2100*2400	7300
JHKK-1000GF	1000	1250	1800	QTA2160G5	8	170*195	35.4	160	190	5000*2100*2400	7500
JHKK-1100GF	1100	1375	1980	QTA2160G7	8	170*195	35.4	160	190	5000*2100*2400	7500
JHKK-1100GF	1100	1375	1980	QTA3240G1	12	170*195	53.1	180	189	5100*2150*2450	9000
JHKK-1320GF	1320	1650	2376	QTA3240G5	12	170*195	53.1	180	189	5230*2220*2750	10500
JHKK-1500GF	1500	1875	2700	QTA3240G7	12	170*195	53.1	180	189	5400*2220*2750	10800
JHKK-1650GF	1650	2062.5	2970	QTA3240G9	12	170*195	53.1	180	189	5800*2220*2750	11500
JHKK-1800GF	1800	2250	3240	QTA4320G3	16	170*195	70.8	240	190	5800*2220*2750	11500
JHKK-2000GF	2000	2500	3600	QTA4320G5	16	170*195	70.8	240	189	6000*2600*2800	12000
JHKK-2200GF	2200	2750	3960	QTA4320G7	16	170*195	70.8	240	189	6200*2600*2800	14000
JHKK-2200GF	2200	2750	3960	QTA5400G1	20	170*195	88.5	300	191	6500*2600*2800	16000
JHKK-2420GF	2420	3025	4356	QTA5400G3	20	170*195	88.5	300	190	6500*2600*2800	16200
JHKK-2600GF	2600	3250	4680	QTA5400G5	20	170*195	88.5	300	190	6500*2600*2800	16500

以上技术参数转速为1500RPM，频率50Hz，额定电压400/230V，功率因数0.8，接线方式为3相4线。60Hz发电机组可以根据客户的特殊需要定制。发电机可以根据客户需要，选用无锡斯坦福、上海马拉松、上海恒声等知名品牌。本参数表仅供参考，如有更改恕不另行通知。

The parameters above is about: rotating speed 1500RPM, frequency 50Hz, rated voltage 400/230V, power factor 0.8, three phase four line of wiring mode. 60Hz can be customized. We have Stamford, Marathon, Hengsheng and other famous brands alternator for yuor choice. This parameter table is only for reference and no notice any more if have change in the future.



■ 潍柴动力系列柴油发电机组

潍柴发电机组功率范围10~1000kW，机组使用潍柴集团自主研发生产的发动机，配置知名品牌发电机及控制器。发动机产品系列包括扬柴系列、道依茨WP4/WP6系列、WP10系列、WP12系列、WP13系列、160系列、170系列、博杜安系列等，使用这些发动机与引进技术生产的国内外知名的品牌发电机等相配套，生产国内技术领先的发电机组。

■ Weichai Power series

Weichai Power generator power range is from 10-1000kw, This gen-set uses diesel engine produced by Weichai power engine, which is independent research and developed, and equipped with famous alternator and control panel. Engine series include Yangchai, Deutz WP4/WP6, WP10, WP12, WP13, 160, 170, baudouin etc. Using these engines with world and domestic well-known brand alternator to produce the leading diesel gen-set in China.



标准配置 Standard equipment

- 发动机  
Diesel engine
- 启动免维护蓄电池及蓄电池连接线  
Starting batteries and battery connect wires
- 40°C散热水箱  
40°C water cooled radiator
- 工业消音器、波纹管  
Silencer and flexible exhaust hose
- 发电机  
Alternator
- 输出断路器  
Output circuit breaker
- 智能控制屏  
Digital control panel
- 钢式底架  
Steel base frame

可选配置 Optional equipment

- 静音箱  
Sound proof
- 全自动控制系统  
ATS
- 50°C散热水箱  
50°C water cooled radiator
- 水套加热器  
Water heater
- 自动并机控制系统  
Automatic parallel synchronizing control system

■ 潍柴动力系列发电机组技术参数

Weichai Power generator technical parameters

机组型号 Model	功率Power KW	电流A KVA	电流A Current	发动机型号 Engine model	缸数 Cylinder	缸径*行程 Bore*Stroke	排气量L Displacement	机油容量L Lube oil	油耗g/kw.h Consumption	尺寸mm Size	重量Kg Weight
潍柴动力扬柴系列											
JHW-16GF	16	20	28.8	WP2.1D18E2	4	85*92	2.09	12	235	1500*630*1100	650
JHW-20GF	20	25	36	WP2.5D22E2	4	90*100	2.54	12	235	1550*630*1150	660
JHW-30GF	30	37.5	54	WP3.9D33E2	4	102*118	3.86	12	235	1650*650*1180	700
JHW-34GF	34	42.5	61.2	WP4.3D38E2	4	105*125	4.33	12	235	1650*650*1180	800
JHW-40GF	40	50	72	WP4.6D44E2	4	108*125	4.58	12	235	1700*650*1180	820
JHW-48GF	48	60	86.4	WP4.1D50E2	4	105*118	4.09	12	215	1700*650*1180	820
JHW-58GF	58	72.5	104.4	WP4.3D61E2	4	108*118	4.32	12	210	1800*650*1200	850
潍柴动力道依茨系列											
JHW-30GF	30	37.5	54	D226B-3D	3	105*120	3.12	7.25	215	1750*750*1350	610
JHW-40GF	40	50	72	TD226B-3D	3	105*120	3.12	7.25	215	1750*750*1350	620
JHW-50GF	50	62.5	90	WP4D66E200	4	105*130	4.5	28	198	1950*800*1340	1000
JHW-60GF	60	75	108	WP4D66E200	4	105*130	4.5	28	198	1950*800*1340	1000
JHW-80GF	80	100	144	WP4D100E200	4	105*130	4.5	28	198	2200*800*1340	1100
JHW-90GF	90	112.5	162	WP4D100E200	4	105*130	4.5	28	198	2200*800*1340	1100
JHW-90GF	90	112.5	162	WP4D108E200	4	105*130	4.5	28	198	2200*820*1340	1250
JHW-100GF	100	125	180	WP4D108E200	4	105*130	4.5	28	198	2200*820*1340	1250
JHW-100GF	100	125	180	WP6D132E200	6	105*130	6.75	35	198	2300*830*1450	1250
JHW-120GF	120	150	216	WP6D132E200	6	105*130	6.75	35	198	2470*930*1450	1550
JHW-120GF	120	150	216	WP6D152E200	6	105*130	6.75	35	198	2470*930*1450	1620
JHW-132GF	132	165	237.6	WP6D152E200	6	105*130	6.75	39	198	2470*930*1450	1620
潍柴动力蓝擎系列											
JHW-180GF	150	187.5	270	WP10D200E200	6	126*130	9.726	35	195	2750*1050*1400	1900
JHW-200GF	200	250	360	WP10D238E200	6	126*130	9.726	35	195	2750*1050*1800	2100
JHW-240GF	220	275	396	WP10D264E200	6	126*130	9.726	35	195	2900*1100*1800	2200
JHW-280GF	250	312.5	450	WP12D317E200	6	126*155	11.596	38	195	2900*1100*1800	2300
JHW-300GF	300	375	540	WP13D385E200	6	127*165	12.54	48	195	3000*1150*1800	2400
JHW-350GF	300	375	540	WP13D385E200	6	127*165	12.54	48	195	3050*1150*1800	2500
潍柴动力博杜安系列											
JHW-400GF	400	500	720	6M26D447E200	6	150*150	15.9	65	210	3500*1500*1800	4000
JHW-440GF	440	550	792	6M26D484E200	6	150*150	15.9	65	210	3500*1500*1800	4800
JHW-500GF	500	625	900	6M33D572E200	6	150*185	19.6	65	210	3600*1500*1850	5000
JHW-550GF	550	687.5	990	6M33D605E200	6	150*185	19.6	65	210	3600*1500*1850	5000
JHW-700GF	700	875	1260	12M26D792E200	12	150*150	31.8	120	210	4500*1800*2200	7800
JHW-800GF	800	1000	1440	12M26D902E200	12	150*150	31.8	120	210	4500*1850*2200	8000
JHW-880GF	880	1100	1584	12M26D968E200	12	150*150	31.8	120	210	4600*1850*2250	8500
JHW-1000GF	1000	1250	1800	12M33D1108E200	12	150*185	39.2	146	210	4800*2000*2350	9200
JHW-1100GF	1100	1375	1980	12M33D1210E200	12	150*185	39.2	146	210	4800*2050*2450	9500



### ■ 无动系列柴油发电机组

无动系列柴油发电机组是我公司采用无锡动力工程股份有限公司研制生产的万迪牌135、138系列新品柴油机，配置名牌发电机而成。无动万迪柴油机选用高供油速率的P型高压油泵与多孔低贯量喷油器匹配，使油机功率更大、综合性能更优良。功率从100KW-1000KW近20多个功率档不同功能的柴油发电机组，让客户有更大的选择余地。

### ■ Wuxi Power series

Wudong series diesel generator set adopts dhabi brand new diesel engine from wuxi power engineering Co., LTD, and famous alternator. Wudong dhabi diesel engine selects high fuel supply rate of P type high pressure pump and porous low penetration quantity injector, that makes oil machine power matching larger, superior comprehensive performance. Power range of diesel generator set from 100KW to 700KW is about more than 20 different power function ,which makes customers have more choices.



#### 标准配置 Standard equipment

- 发动机  
Diesel engine
- 启动免维护蓄电池及蓄电池连接线  
Starting batteries and battery connect wires
- 40°C散热水箱  
40°Cwater cooled radiator
- 工业消音器、波纹管  
Silencer and flexible exhaust hose
- 发电机  
Alternator
- 输出断路器  
Output circuit breaker
- 智能控制屏  
Digital control panel
- 钢式底架  
Steel base frame

#### 可选配置 Optional equipment

- 静音箱  
Sound proof
- 全自动控制系统  
ATS
- 50°C散热水箱  
50°Cwater cooled radiator
- 水套加热器  
Water heater
- 自动并机控制系统  
Automatic parallel synchronizing control system

### ■ 无动系列发电机组技术参数

Wudong Power generator technical parameters

机组型号 Model	功率Power KW KVA	电流A Current	发动机型号 Engine model	缸数 Cylinder	缸径*行程 Bore*Stroke	排气量L Displacement	机油容量L Lube oil	油耗g/kw.h Consumption	尺寸mm Size	重量Kg Weight
JHWD-220GF	220 275	396	WD129TAD23	6	135*150	12.9	28	217	3000*1100*1750	2200
JHWD-250GF	250 312.5	450	WD129TAD25	6	135*150	12.9	28	217	3000*1100*1750	2250
JHWD-280GF	280 350	504	WD135TAD28	6	138*150	13.5	28	221	3200*1400*1800	3400
JHWD-300GF	300 375	540	WD145TAD30	6	138*150	14.5	28	217	3000*1400*1800	3200
JHWD-320GF	320 400	576	WD145TAD33L	6	138*160	14.5	28	198	3500*1600*1900	3600
JHWD-350GF	350 437.5	630	WD145TAD35	6	138*160	14.5	28	198	3500*1600*1980	3700
JHWD-380GF	380 475	684	WD269TAD38	12	138*150	26.9	50	198	3600*1650*1900	3850
JHWD-400GF	400 500	720	WD269TAD41	12	135*150	26.9	50	198	3650*1650*1900	3900
JHWD-420GF	420 525	756	WD269TAD43	12	138*150	26.9	50	198	3650*1650*1900	3950
JHWD-450GF	450 562.5	810	WD269TAD45	12	138*150	26.9	50	198	3650*1650*1900	4000
JHWD-480GF	480 600	864	WD269TAD48	12	138*150	26.9	50	198	3650*1650*1900	4100
JHWD-500GF	500 625	900	WD269TAD50	12	138*150	26.9	50	198	3650*1650*1900	4100
JHWD-560GF	560 700	1008	WD269TAD56	12	138*150	26.9	50	213	3650*1650*1900	4200
JHWD-580GF	580 725	1044	WD287TAD58	12	138*160	28.7	50	221	3650*1650*1900	4200
JHWD-620GF	620 775	1116	WD287TAD61L	12	138*160	28.7	50	198	3650*1670*2070	4200
JHWD-680GF	680 850	1224	WD327TAD68	12	145*165	32.7	90	197	4000*1700*2000	4400
JHWD-780GF	780 975	1404	WD327TAD78	12	145*165	32.7	90	197	4100*1700*2000	4500
JHWD-820GF	820 1025	1476	WD327TAD82	12	145*165	32.7	90	196	4100*1880*2350	4700
JHWD-880GF	880 1100	1584	WD327TAD88	12	145*165	32.7	90	196	4150*1900*2350	4800
JHWD-900GF	900 1125	1620	WD327TAD92	12	145*165	32.7	90	196	4200*2000*2350	5100
JHWD-1000GF	1000 1250	1800	WD327TAD100	12	145*165	32.7	90	196	4300*2000*2350	5200
JHWD-1100GF	1100 1375	1980	WD360TAD110	12	152*165	35.9	110	196	4300*2000*2350	7800
JHWD-1200GF	1200 1500	2160	WD360TAD120	12	152*165	35.9	110	196	4500*2000*2350	8000

以上技术参数转速为1500RPM，频率50Hz，额定电压400/230V，功率因数0.8，接线方式为3相4线。60Hz发电机组可以根据客户的特殊需要定制。发电机可以根据客户需要，选用无锡斯坦福、上海马拉松、上海恒声等知名品牌。本参数表仅供参考，如有更改恕不另行通知。

The parameters above is about: rotating speed 1500RPM, frequency 50Hz, rated voltage 400/230V, power factor 0.8, three phase four line of wiring mode. 60Hz can be customized. We have Stamford, Marathon, Hengsheng and other famous brands alternator for yuor choice. This parameter table is only for reference and no notice any more if have change in the future.



### ■ 济柴系列柴油发电机组

济柴柴油发电机出自石油部企业济南柴油机股份公司，是用途广泛、性能优良的高速大功率柴油发电机组，产品荣获“国优金质奖”、“全国用户满意产品称号”等。该发电机组产品经过多年研制、开发，不断地吸收现代内燃机领域中的科技成果，具备技术经济指标先进、结构紧凑、易于操作，维修方便，能适应各种恶劣环境条件下作业等特点。

### ■ JDEC series

JDEC Diesel generator set use the engine produced by Jinan Diesel Engine Co.,Ltd which belongs to Oil Ministry,they are widely used and of high quality.This Diesel generator sets develop many years and keep learning from morden engine technology,they have lots of advantages,such as high technology,compact form,easy operation and maintenance,and they are suitable for any badly working enviroment.



### ■ 济柴系列发电机组技术参数 JDEC generator technical parameters

机组型号 Model	功率Power KW	电流A KVA	发动机型号 Engine model	缸数 Cylinder	缸径*行程 Bore*Stroke	排气量L Displacement	机油容量L Lube oil	油耗g/kw.h Consumption	尺寸mm Size	重量Kg Weight	
JHJ-450GF	450	562.5	810	JC15	6	190*210	35.73	150	220	4500*1500*2400	6800
JHJ-500GF	500	625	900	G6190ZLD	6	190*210	35.73	150	220	4500*1500*2400	6800
JHJ-700GF	700	875	1260	8190ZLD	8	190*210	47.6	160	205	5750*1600*2600	10700
JHJ-800GF	800	1000	1440	Z12V190B	12	190*210	71.45	200	209	5800*1800*2700	11000
JHJ-900GF	900	1125	1620	Z12V190BD7	12	190*210	71.45	200	209	5880*1800*2700	11000
JHJ-1000GF	1000	1250	1800	G12V190ZL1	12	190*210	71.45	200	209	5800*1800*2770	11000
JHJ-1200GF	1200	1500	2160	G12V190ZLD10	12	190*210	71.45	200	217	6000*2040*2800	15500
JHJ-1300GF	1300	1625	2340	B12V190ZLD	12	190*215	73.15	200	205	6300*2100*2800	16000
JHJ-1500GF	1500	1875	2700	H12V190Z	12	190*215	73.15	200	200	6300*2200*2900	17000
JHJ-1600GF	1600	2000	2880	H12V190Z	12	190*215	73.15	200	200	6300*2200*2900	17000
JHJ-2000GF	2000	2500	3600	H16V190ZL	16	190*215	97.53	200	200	6500*2200*2900	17500
JHJ-2400GF	2400	3000	4320	H16V190ZL	16	190*215	97.53	200	219	6600*2200*2900	18000

以上技术参数转速为1500RPM，频率50HZ，额定电压400/230V，功率因数0.8，接线方式为3相4线。60HZ发电机组可以根据客户的特殊需要定制。发电机可以根据客户需要，选用无锡斯坦福、上海马拉松、上海恒声等知名品牌。本参数表仅供参考，如有更改恕不另行通知。  
The parameters above is about: rotating speed 1500RPM, frequency 50HZ, rated voltage 400/230V, power factor 0.8, three phase four line of wiring mode. 60HZ can be customized. We have Stamford, Marathon, Hengsheng and other famous brands alternator for yuor choice. This parameter table is only for reference and no notice any more if have change in the future.

### 标准配置 Standard equipment

- 发动机  
Diesel engine
- 启动免维护蓄电池及蓄电池连接线  
Starting batteries and battery connect wires
- 40°C散热水箱  
40°Cwater cooled radiator
- 工业消音器、波纹管  
Silencer and flexible exhaust hose
- 发电机  
Alternator
- 输出断路器  
Output circuit breaker
- 智能控制屏  
Digital control panel
- 钢式底座  
Steel base frame

### 可选配置 Optional equipment

- 静音箱  
Sound proof
- 全自动控制系统  
ATS
- 50°C散热水箱  
50°Cwater cooled radiator
- 水套加热器  
Water heater
- 自动并机控制系统  
Automatic parallel synchronizing control system





■ 上海乾能系列柴油发电机组

上海乾能系列发电机组是我公司采用上海乾能内燃机有限公司生产的发动机配置名牌发电机而成，功率从120KW-1000KW。为用户提供广泛的选择。上海乾能柴油发电机组运行成本低，售后服务周到，备受用户青睐。

■ Shanghai Qianneng series

Shanghai Qian Neng diesel generator power range is from 120kw/150kva to 1000kw/1250kva. With low cost operation, timely and excellent after sales service of Shanghai Qian Neng diesel generators, more and more customer would like to choose it.



标准配置 Standard equipment

- 发动机  
Diesel engine
- 启动免维护蓄电池及蓄电池连接线  
Starting batteries and battery connect wires
- 40°C散热水箱  
40°C water cooled radiator
- 工业消音器、波纹管  
Silencer and flexible exhaust hose
- 发电机  
Alternator
- 输出断路器  
Output circuit breaker
- 智能控制屏  
Digital control panel
- 钢式底架  
Steel base frame

可选配置 Optional equipment

- 静音箱  
Sound proof
- 全自动控制系统  
ATS
- 50°C散热水箱  
50°C water cooled radiator
- 水套加热器  
Water heater
- 自动并机控制系统  
Automatic parallel synchronizing control system

■ 上海乾能系列发电机组技术参数

Shanghai Qianneng generator technical parameters

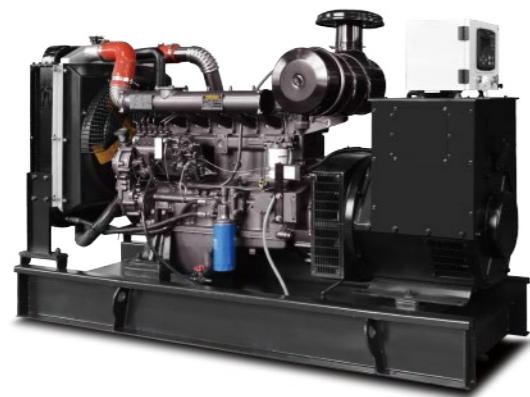
机组型号 Model	功率Power KW	电流A KVA	发动机型号 Current	缸数 Engine model	缸径*行程 Cylinder	排气量L Bore*Stroke	机油容量L Displacement	油耗g/kw.h Lube oil	尺寸mm Consumption	重量Kg Size	重量Kg Weight
JHQN-150GF	150	187.5	270	QN8H163	6	114*135	8.27	28	198	2700*950*1650	1550
JHQN-150GF	150	187.5	270	6135AZD	6	135*150	12.9	28	226	2700*950*1650	1580
JHQN-180GF	180	225	324	QN8H217	6	114*144	8.27	28	198	2800*950*1650	1590
JHQN-180GF	180	225	324	6135BZD	6	135*150	12.9	28	226	2800*950*1650	1610
JHQN-200GF	200	250	360	QN9H245	6	114*144	8.27	28	198	2800*1150*1700	1650
JHQN-200GF	200	250	360	6135AZLD	6	135*150	12.9	28	226	2900*1150*1700	1720
JHQN-220GF	220	275	396	QN13H340	6	135*150	12.9	34	200	3100*1150*1800	2300
JHQN-220GF	220	275	396	6135BZLD	6	135*150	25.8	34	207	3100*1150*1800	2330
JHQN-250GF	250	312.5	450	QN13H340	6	135*150	12.9	34	200	3100*1150*1800	2600
JHQN-280GF	280	350	504	QN13H340	6	135*150	12.9	34	200	3150*1350*1800	2600
JHQN-280GF	280	350	504	6135BZLD-3	6	135*150	12.9	34	207	3150*1350*1800	2600
JHQN-300GF	300	375	540	QN13H380	6	135*160	12.9	34	200	3150*1350*1800	2600
JHQN-320GF	320	400	576	QN13H435	6	135*160	12.9	34	200	3150*1350*1800	2600
JHQN-320GF	320	400	576	6135CZLD	6	135*155	12.9	34	193	3150*1200*1700	2600
JHQN-350GF	350	437.5	630	QN13H435	6	135*160	12.9	34	200	3200*1350*1900	2800
JHQN-350GF	350	437.5	630	12V135AZLD	12	135*150	25.8	57.4	225	3500*1350*1950	3550
JHQN-400GF	400	500	720	QN13H516	6	135*165	12.9	34	200	3200*1350*1750	3200
JHQN-400GF	400	500	720	12V135AZLD-1	12	135*150	25.8	57.4	225	3500*1550*1950	3700
JHQN-450GF	450	562.5	810	QN26H571	12	135*150	26	57.4	210	3500*1700*1950	3800
JHQN-450GF	450	562.5	810	12V135BZLD	12	135*150	26.8	57.4	225	3500*1700*1950	3800
JHQN-500GF	500	625	900	QN26H612	12	135*155	26	57.4	205	3550*1700*1950	3850
JHQN-500GF	500	625	900	12V135BZLD-1	12	135*150	26.8	57.4	225	3550*1700*1950	3850
JHQN-550GF	550	687.5	990	QN26H680	12	135*155	26	57.4	205	3550*1700*1950	3900
JHQN-550GF	550	687.5	990	12V135BZLD-3	12	135*150	26.8	57.4	225	3400*1500*1950	4000
JHQN-600GF	600	750	1080	QN28H748	12	135*158	26	57.4	202	3600*1750*1950	4200
JHQN-600GF	600	750	1080	12V138BZLD	12	135*150	26.8	57.4	207	3600*1750*1950	4200
JHQN-600GF	600	750	1080	QN28H816	12	138*158	28	57.4	202	3600*1750*1950	4300
JHQN-640GF	640	800	1152	QN28H843	12	138*158	28	57.4	202	3600*1900*1950	4500
JHQN-700GF	700	875	1260	QN28H884	12	138*158	28	57.4	202	3600*1900*1950	4500
JHQN-700GF	700	875	1260	QN28H960	12	138*165	28	57.4	198	3600*1900*2000	4600
JHQN-800GF	800	1000	1440	QN28H1100	12	138*165	28	57.4	198	3850*1940*2250	4800
JHQN-880GF	880	1100	1584	QN28H1150	12	138*165	28	57.4	198	4300*1940*2300	5400
JHQN-900GF	900	1125	1620	QN32H1280	12	138*168	32	57.4	196	4300*1940*2300	5500
JHQN-1000GF	1000	1250	1800	QN32H1340	12	138*168	32	57.4	196	4500*1950*2300	5600

以上技术参数转速为1500RPM，频率50Hz，额定电压400/230V，功率因数0.8，接线方式为3相4线。60Hz发电机组可以根据客户的特殊需要定制。发电机可以根据客户需要，选用无锡斯坦福、上海马拉松、上海恒声等知名品牌。本参数表仅供参考，如有更改恕不另行通知。  
The parameters above is about: rotating speed 1500RPM, frequency 50Hz, rated voltage 400/230V, power factor 0.8, three phase four line of wiring mode. 60Hz can be customized. We have Stamford, Marathon, Hengsheng and other famous brands alternator for your choice. This parameter table is only for reference and no notice any more if have change in the future.



## ■ 潍坊系列柴油发电机组

潍柴小功率发电机组采用四冲程直喷式柴油机，体积小、功率大。发电机选用STC系列或无刷系列三次谐波自励恒压，启动电机能力强，整个机组外形美观，性能可靠，适用于要求价廉物美的用户。



## ■ Weifang series

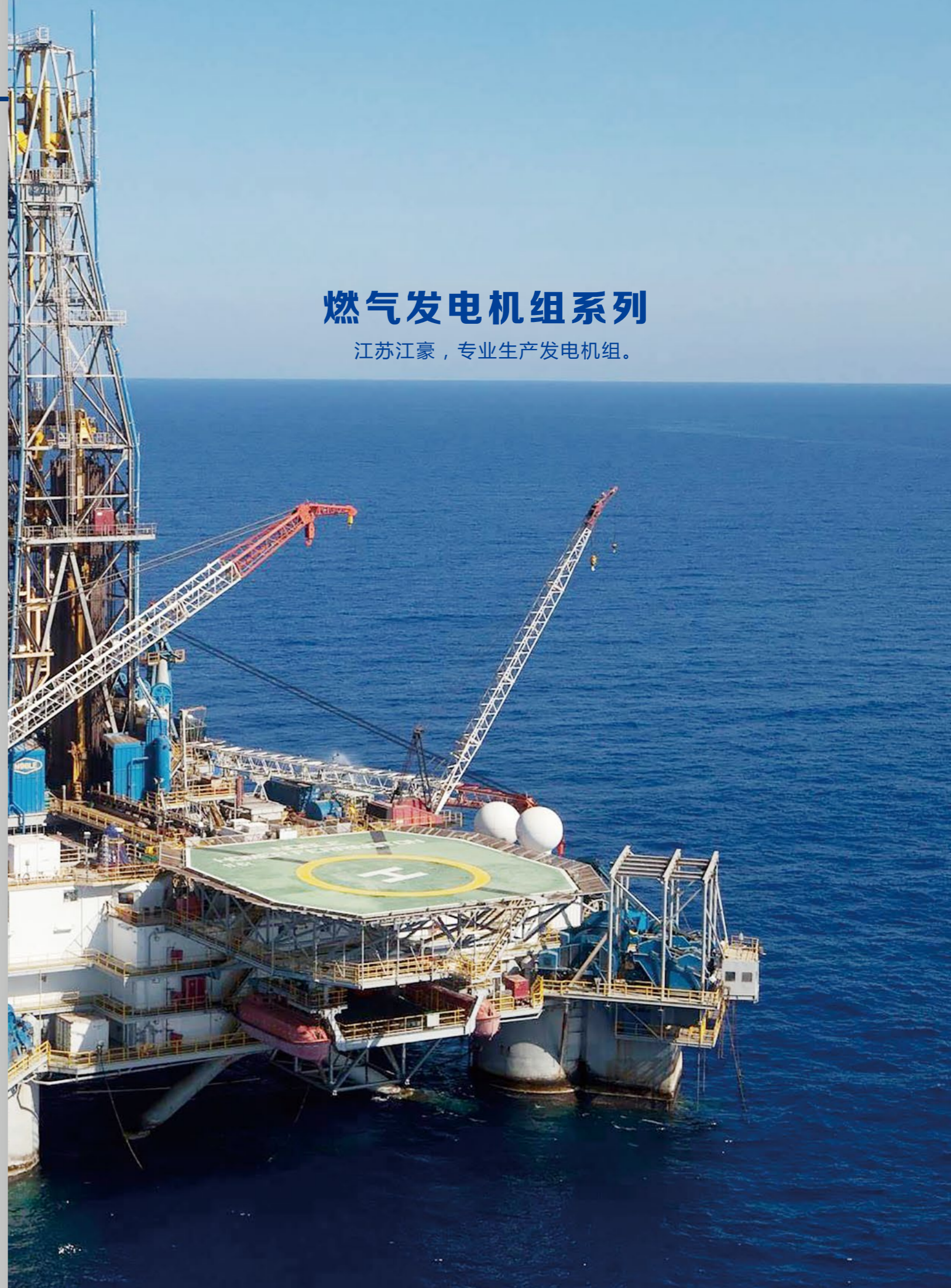
Weichai small power generator adopts four stroke and direct injection engine which has small size but large power. Generator choose STC series or brushless series 3 times harmonic self-excitation constant, start motor ability, the whole unit is of good appearance, reliable performance, and is reasonable to customers who request goodness and cheap price.



机组型号 Model	功率Power KW KVA	电流A Current	发动机型号 Engine model	缸数 Cylinder	缸径*行程 Bore*Stroke	排气量L Displacement	机油容量L Lube oil	油耗g/kw.h Consumption	尺寸mm Size	重量Kg Weight
<b>潍坊系列</b>										
JHW-20GF	20 25	36	K4100D	4	100*115	3.6	10	236	1500*700*1120	630
JHW-24GF	24 30	43.2	K4100D	4	100*115	3.6	10	236	1650*700*1120	640
JHW-30GF	30 37.5	54	K4100D	4	100*115	3.6	10	236	1650*700*1120	650
JHW-40GF	40 50	72	K4100ZD	4	100*115	3.6	11	238	1800*720*1200	750
JHW-50GF	50 62.5	90	R4105ZD	4	105*115	3.6	12	238	1850*760*1300	850
JHW-75GF	75 93.7	135	R6105ZD	6	105*115	3.6	15	238	2250*800*1500	1200
JHW-100GF	100 125	180	R6105AZLD	6	105*115	3.6	16	238	2300*800*1500	1320
JHW-120GF	120 150	216	R6105IZLD	6	105*115	3.6	16	238	2400*800*1500	1410
JHW-150GF	150 187.5	270	R6110IZLD	6	113*115	3.6	16	238	2550*880*1500	1530
JHW-180GF	180 225	324	6120IZLD	6	120*115	3.6	26	226	2700*1000*1800	1600
JHW-200GF	200 250	360	6120IZLD	6	120*115	3.6	26	226	2800*1000*1800	1800
<b>华丰系列</b>										
JHW-20GF	20 25	36	495D10-1	4	95*115	3.26	13	231	1560*630*1070	640
JHW-24GF	24 30	43	495D10-1	4	95*115	3.26	13	231	1600*630*1060	670
JHW-30GF	30 37.5	54	K4102D3-1	4	102*115	3.76	13	218	1600*630*1160	680
JHW-40GF	40 50	72	K4100ZD1	4	100*115	3.26	13	231	1720*760*1300	700
JHW-50GF	50 62.5	90	PHF4056ZD1	4	105*125	4.33	13	226	1850*760*1200	810
JHW-64GF	64 80	115	PHF6084ZD1	6	105*125	6.49	17	231	1850*800*1350	900
JHW-75GF	75 93.7	135	PHF6084ZD1	6	105*125	6.49	17	231	2200*800*1450	1200
JHW-90GF	90 112.5	162	PHF6100ZLD1	6	105*125	6.49	17	231	2300*800*1450	1250
JHW-100GF	100 125	180	PHF6110ZLD1	6	105*125	6.75	17	217	2380*800*1520	1300
JHW-120GF	120 150	216	PHF6132ZLD1	6	105*125	6.75	17	217	2400*800*1500	1400
JHW-150GF	150 187.5	270	PHF6113D1	6	113*125	7.518	17	208	2550*850*1600	1570
JHW-320GF	320 400	576	PHF14L400	6	136*165	14.38	45	203	3100*1150*1800	3100
JHW-360GF	360 450	648	PHF15L440	6	140*165	15.24	45	203	3250*1200*1800	3500

## 燃气发电机组系列

江苏江豪，专业生产发电机组。





### ■ 燃气系列发电机组

燃气发电机组是一种以液化气、天然气等可燃气体为燃烧物，代替汽油、柴油作为发动机动力的新型、高效的新能源发电机。燃气发电机具有输出功率范围广，启动和运行可靠、发电质量好、重量轻、体积小、维护简单、低频噪声小等优点。

江豪燃气系列发电机组选用扬动、普创、重汽、威曼、潍柴动力、玉柴、济柴等发动机为动力，搭配斯坦福、马拉松、恒声等发电机。质量稳定，使用成本低。

### ■ Gas generator set series

Gas generator is a kind of liquefied petroleum gas, natural gas and other combustible gas as combustion, instead of gasoline, for diesel engine power, as a new and high efficient generator. Gas generators have advantages of wide output power range, high starting and running reliability, light weight, small size, simple maintenance and low noise.

Jianghao gas series generator set Yangdong, Puchuang, Sinotruk, VMAN, Weichai power, Yuchai, Jichai and other engines as the prime power, with Stamford, Marathon, Hengsheng and other alternators. High quality and low cost.



#### 标准配置 Standard equipment

- 发动机  
Diesel engine
- 启动免维护蓄电池及蓄电池连接线  
Starting batteries and battery connect wires
- 40°C散热水箱  
40°C water cooled radiator
- 工业消音器、波纹管  
Silencer and flexible exhaust hose
- 发电机  
Alternator
- 输出断路器  
Output circuit breaker
- 智能控制屏  
Digital control panel
- 钢式底座  
Steel base frame

#### 可选配置 Optional equipment

- 静音箱  
Sound proof
- 全自动控制系统  
ATS
- 50°C散热水箱  
50°C water cooled radiator
- 水套加热器  
Water heater
- 自动并机控制系统  
Automatic parallel synchronizing control system

### ■ 燃气系列发电机组技术参数

Gas generator set series technical parameters

机组型号 Model	功率Power KW KVA	电流A Current	发动机型号 Engine model	缸数 Cylinder	缸径*行程 Bore*Stroke	排气量L Displacement	机油容量L Lube oil	油耗g/kw.h Consumption	尺寸mm Size	重量Kg Weight
扬动燃气系列										
JHRQ-12GF	12 15	21.6	YD4M1D	4	80*90	2.1	10	235	1500*600*1600	550
JHRQ-20GF	20 25	36	YD4B1D	4	80*90	2.1	10	235	1500*650*1600	600
普创燃气系列										
JHRQ-40GF	40 50	72	PC-4BTAA44-E	4	102*120	3.9	11	210	1700*710*1110	800
JHRQ-50GF	50 62.5	90	PC-6B60-E	6	102*120	5.9	24	207	1900*750*1100	1000
JHRQ-80GF	80 100	144	PC-6BTAA91-E	6	102*120	5.9	24	207	2200*800*1200	1200
JHRQ-120GF	120 150	216	PC-6CTAA152-E	6	114*135	8.3	28	207	2500*1050*1480	1300
JHRQ-150GF	150 187.5	270	PC-6LTAA177-E	6	114*145	8.9	28	206	3200*1360*1800	1600
JHRQ-200GF	200 250	360	PC-NTA-E	6	140*152	14	38	206	3000*1050*1700	2600
重汽燃气系列										
JHRQ-120GF	120 150	216	WT615D-1	6	126*130	9.726	35	198	2850*1000*1700	2100
JHRQ-150GF	150 187.5	270	WT615D-3	6	126*130	9.726	35	196	3150*1100*1700	2280
JHRQ-160GF	160 200	288	WT615D-5	6	126*130	9.726	35	196	3150*1100*1700	2280
JHRQ-170GF	170 212.5	306	WT615D-7	6	126*130	9.726	35	195	3150*1100*1700	2280
JHRQ-180GF	180 225	324	T12D-1	12	126*155	11.596	68	195	3300*1200*1800	2400
JHRQ-200GF	200 250	360	T12D-2	12	126*155	11.596	68	195	3500*1240*1900	3200
威曼燃气系列										
JHRQ-150GF	150 187.5	270	D11	6	128*142	10.96	25	197	3100*1000*1650	2100
JHRQ-200GF	200 250	360	DT15	6	128*142	14.618	27	197	3150*1050*1650	2200
JHRQ-310GF	310 387.5	558	DT22	12	128*142	21.927	57	192	3800*1250*1850	3200
JHRQ-420GF	420 525	756	DT30	12	128*142	29.235	78	192	3860*1280*1900	3800
济柴燃气系列										
JHRQ-600GF	600 750	1080	12V190Z	12V	190/210	73.15	200	221	5950*2200*2800	13600
JHRQ-700GF	700 875	1260	12V190Z	12V	190/215	73.15	200	221	5950*2200*2800	14600
JHRQ-800GF	800 1000	1440	12V190Z	12V	190/215	73.15	200	221	5950*2200*2800	14800
JHRQ-900GF	900 1125	1620	A12V190Z	12V	190/215	73.15	200	221	5950*2200*2800	14800
JHRQ-1000GF	1000 1250	1800	16V190Z	16V	190/215	73.15	200	221	8600*2870*3000	19500
JHRQ-1200GF	1200 1500	2160	16V190Z	16V	190/215	73.15	200	221	8600*2870*3000	19500



■ 燃气系列发电机组技术参数

Gas generator set series technical parameters

机组型号 Model	功率Power KW	电流A KVA	发动机型号 Engine model	缸数 Cylinder	缸径*行程 Bore*Stroke	排气量L Displacement	机油容量L Lube oil	油耗g/kw.h Consumption	尺寸mm Size	重量Kg Weight	
<b>潍柴动力燃气系列</b>											
JHRQ-30GF	30	37.5	54	WP4D40E300NG	4	105*130	6.75	23	198	1700*700*1110	820
JHRQ-50GF	50	62.5	90	WP4D66E300NG	4	105*130	6.75	23	198	1700*750*1110	850
JHRQ-50GF	50	62.5	90	WP6D66E200NG	6	105*130	6.75	23	198	2100*800*1200	1100
JHRQ-75GF	75	93.75	135	WP6D100E300NG	6	105*130	6.75	23	198	2200*800*1200	1200
JHRQ-100GF	100	125	180	WP6D132E300NG	6	105*130	6.75	23	198	2500*1000*1300	1300
JHRQ-120GF	120	150	216	WP10D158E300NG	6	126*130	9.726	23	195	2500*1000*1350	1320
JHRQ-150GF	150	187.5	270	WP10D200E300NG	6	126*130	9.726	24	195	2500*1100*1350	1380
JHRQ-180GF	180	225	324	WP12D238E200NG	12	126*155	11.596	24	195	3500*1250*1800	2400
JHRQ-200GF	200	250	360	WP12D264E200NG	12	126*155	11.596	24	195	3500*1250*1800	2600
JHRQ-250GF	250	312.5	450	WP13D317E300NG	6	127*165	12.54	36	195	3600*1250*1800	2700
JHRQ-500GF	500	625	900	12M26D605E300NG12	12	150*150	31.8	113	195	4600*1500*2100	5200
JHRQ-500GF	500	625	900	12M26D605E300NG12	12	150*150	31.8	113	195	4100*1500*1900	4300
<b>广西玉柴燃气系列</b>											
JHRQ-50GF	50	62.5	90	YC4D90N-D30	4	108*115	4.2	11	205	2100*750*1300	800
JHRQ-80GF	80	100	144	YC4G135N-D30	4	112*132	4.2	17.5	205	2100*750*1500	1100
JHRQ-100GF	100	125	180	YC6J150N-D30	6	105*125	6.49	17.5	203	2600*1000*1600	1600
JHRQ-120GF	120	150	216	YC6G180N-D30	6	112*132	7.8	22	199	2600*1000*1600	1700
JHRQ-150GF	150	187.5	270	YC6MK270N-D30	6	123*145	10.34	28	195	3100*1100*1700	2200
JHRQ-200GF	200	250	360	YC6K300N-D30	6	129*165	12.94	45	198	3200*1100*1700	2300
JHRQ-220GF	220	275	396	YC6K350N-D30	6	129*165	12.94	45	195	3400*1240*1900	3200
JHRQ-250GF	250	312.5	450	YC6K400N-D30	6	129*165	12.94	45	190	3450*1240*1900	3250
JHRQ-280GF	280	350	504	YC6K420N-D30	6	129*165	12.94	45	192	3550*1240*1900	3300
JHRQ-300GF	300	375	540	YC6T450N-D30	6	145/165	16.35	52	195	3600*1250*1900	3500
JHRQ-400GF	400	500	720	YC6TD600N-D30	6	200/210	39.58	180	195	4100*1400*2000	5100
JHRQ-400GF	400	500	720	YC6C660N-D30	6	200/210	39.58	180	190	4300*1500*2150	5900
JHRQ-500GF	500	625	900	YC6C780N-D30	6	200/210	39.58	180	190	4500*1500*2200	6500
JHRQ-550GF	550	687.5	990	YC6C840N-D30	6	200/210	39.58	180	190	4500*1500*2200	7000
JHRQ-600GF	600	750	1080	YC6C935N-D30	6	200/210	39.58	180	190	5300*1550*2200	7200

以上技术参数转速为1500RPM，频率50Hz，额定电压400/230V，功率因数0.8，接线方式为3相4线。60Hz发电机组可以根据客户的特殊需要定制。发电机可以根据客户需要，选用无锡斯坦福、上海马拉松、上海恒声等知名品牌。本参数表仅供参考，如有更改恕不另行通知。

The parameters above is about: rotating speed 1500RPM, frequency 50Hz, rated voltage 400/230V, power factor 0.8, three phase four line of wiring mode. 60Hz can be customized. We have Stamford, Marathon, Hengsheng and other famous brands alternator for your choice. This parameter table is only for reference and no notice any more if have change in the future.

## 船用发电机组系列

江苏江豪，专业生产发电机组。



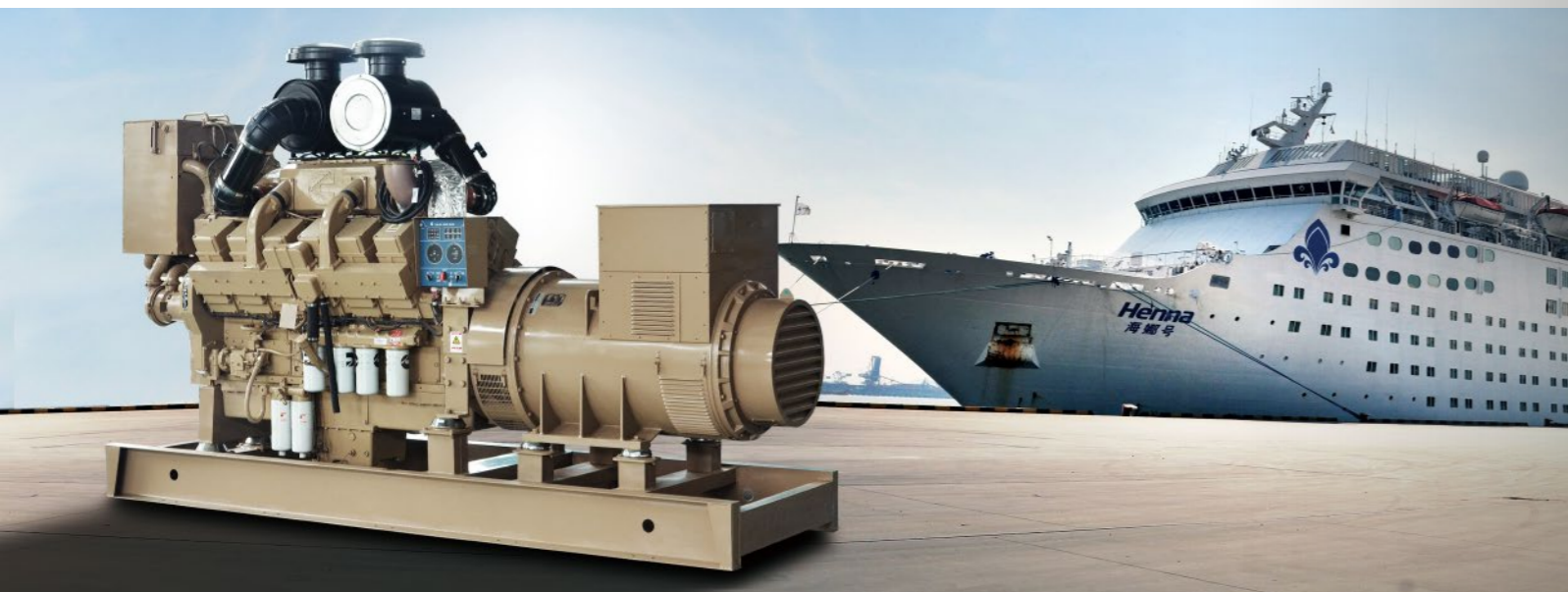


■ 康明斯船用系列柴油发电机组 (50Hz)

江豪康明斯船用发电机组选用康明斯船用柴油机为动力，功率范围30kW-1000kW (37.5KVA-1250KVA)，可选配马拉松、斯坦福、孚日等国内外知名品牌发电机。该系列发电机组质量优异，可靠性高，可提供柴油机国际防止空气污染证书以及CCS、BV船检证书。广受用户好评。

■ Cummins marine series(50Hz)

Jianghao Cummins marine generator powered by Cummins marine diesel engine, power range from 30 kw to 1000 kw (37.5 KVA - 1250 KVA), We have marathon, Stanford, Sunvim and other famous brands alternators to meet your demands. This series of genset is of excellent quality and high reliability, We can provide international air pollution-prevented certification and the certificate of CCS, BV classification survey.which is praised by our customers.



标准配置 Standard equipment

- 发动机  
Diesel engine
- 发电机  
Alternator
- 智能控制屏  
Digital control panel
- 钢式底架  
Steel base frame

可选配置 Optional equipment

- 静音箱  
Sound proof
- 船用消声器  
Marine silencer
- 水套加热器  
Water heater
- 自动并机控制系统  
Automatic parallel synchronizing control system

■ 康明斯船用系列发电机组技术参数 (50Hz)  
Cummins marine generator technical parameters(50Hz)

机组型号 Model	功率Power KW	KVA	频率/电压 Fre/ Volt	发动机型号 Engine model	发动机功率 Engine Power	缸数 Cylinder	缸径*行程 Bore*Stroke	排气量L Displacement	油耗 L/h Consumption	尺寸mm Size	重量Kg Weight
CCFJ30JW	30	37.5	50/400	4BTA3.9-GM47	47/1500	4	102×102	3.9	6.39	1650*850*1270	760
CCFJ40JW	40	50	50/400	4BTA3.9-GM47	47/1500	4	102×102	3.9	10.02	1740*850*1270	800
CCFJ50JW	50	63	50/400	6BT5.9-GM83	83/1500	6	102×120	5.9	12.47	1900*895*1300	1000
CCFJ64JW	64	80	50/400	6BT5.9-GM83	83/1500	6	102×120	5.9	15.96	1900*895*1300	1100
CCFJ75JW	75	93.75	50/400	6BT5.9-GM83	100/1500	6	102×120	5.9	18.71	1920*895*1300	1250
CCFJ90JW	90	112.5	50/400	6BTA5.9-GM100	100/1500	6	102×120	5.9	22.45	1995*895*1300	1300
CCFJ100JW	100	125	50/400	6CT8.3--GM115	115/1500	6	114×135	8.3	24.94	2110*860*1360	1650
CCFJ120JW	120	150	50/400	6CTA8.3-GM155	155/1500	6	114×135	8.3	29.93	2110*860*1360	1700
CCFJ150JW	150	187.5	50/400	6LTAA8.9-GM200	200/1500	6	114×145	8.9	31.8	2210*860*1400	1870
CCFJ180JW	180	225	50/400	6LTAA8.9-GM200	200/1500	6	114×145	8.9	38.16	2210*860*1400	1890
CCFJ200J	200	250	50/400	NTA855-DM	240/1500	6	140×152	14	48.94	2760*995*1790	3100
CCFJ200JW	200	250	50/400	N855-DM	240/1500	6	140X152	14	48.94	2760*995*1790	3100
CCFJ250J	250	313	50/400	NTA855-DM	284/1500	6	140×152	14	61.18	2760*995*1790	3180
CCFJ250JW	250	313	50/400	N855-DM	284/1500	6	140×152	14	61.18	2760*995*1790	3180
CCFJ280J	280	350	50/400	NTA855-DM	317/1500	6	140×152	14	68.52	2998*995*1790	3250
CCFJ280JW	280	350	50/400	N855-DM	317/1500	6	140×152	14	68.52	2998*995*1790	3250
CCFJ300J	300	375	50/400	KTA19-DM	336/1500	6	159×159	19	44.8	3170*1000*1905	3750
CCFJ320JW	320	400	50/400	K19-DM	358/1500	6	159×159	19	49.5	3170*1000*1905	3750
CCFJ350J	350	438	50/400	KTA19-DM	403/1500	6	159×159	19	49.5	3170*1000*1905	3800
CCFJ350JW	350	438	50/400	K19-DM	410/1500	6	159×159	19	49.5	3170*1000*1905	3800
CCFJ400J	400	500	50/400	KTA19-DM	448/1500	6	159×159	19	54.2	3170*1000*1905	3950
CCFJ400JW	400	500	50/400	K19-DM	448/1500	6	159×159	19	54.2	3170*1000*1905	3950
CCFJ500J	500	625	50/400	KT38-DM	560/1500	12	159×159	38	78.5	3950*1500*2500	6200
CCFJ600J	600	750	50/400	KTA38-DM	664/1500	12	159×159	38	87.5	4050*1400*2680	6550
CCFJ650J	650	813	50/400	KTA38-DM	746/1500	12	159×159	38	78.5	4050*1400*2680	6980
CCFJ700JW	700	875	50/400	K38-DM	814/1500	12	159×159	38	103.7	4100*1500*2500	6500
CCFJ800J	800	1000	50/400	KTA38-DM	880/1500	12	159×159	38	109.4	4100*1500*2500	7000
CCFJ800JW	800	1000	50/400	K38-DM	880/1500	12	159×159	38	109.4	4100*1500*2500	7000
CCFJ1000JW	1000	1250	50/400	K50-DM	1092/1500	12	159×159	38	141.7	4250*1500*2500	7500



■ 康明斯船用系列柴油发电机组 (60Hz)

江豪康明斯船用发电机组选用康明斯船用柴油机为动力，功率范围40kW-1200kW (50KVA-1500KVA)，可选配马拉松、斯坦福、孚日等国内外知名品牌发电机。该系列发电机组质量优异，可靠性高，可提供柴油机国际防止空气污染证书以及CCS、BV船检证书。广受用户好评。

■ Cummins marine series(60Hz)

Jianghao Cummins marine generator powered by Cummins marine diesel engine, power range from 40 kw to 1200 kw (50KVA - 1500KVA), We have marathon, Stanford, Sunvim and other famous brands alternators to meet your demands. This series of genset is of excellent quality and high reliability, We can provide international air pollution-prevented certification and the certificate of CCS, BV classification survey.which is praised by our customers.



■ 康明斯船用系列发电机组技术参数 (60Hz)  
Cummins marine generator technical parameters(60Hz)

机组型号 Model	功率Power KW KVA	频率/电压 Fre/ Volt	发动机型号 Engine model	发动机功率 Engine Power	缸数 Cylinder	缸径*行程 Bore*Stroke	排气量L Displacement	油耗 L/h Consumption	尺寸mm Size	重量Kg Weight
CCFJ40JW	40 50	60/440	4BTA3.9-GM65	65/1800	4	102×102	3.9	10.02	1740*850*1270	800
CCFJ50JW	50 62.5	60/440	4BTA3.9-GM65	65/1800	4	102×102	3.9	12.53	1740*850*1270	850
CCFJ64JW	64 80	60/440	6BT5.9-GM100	100/1800	6	102×120	5.9	15.96	1905*895*1300	1100
CCFJ75JW	75 93.75	60/440	6BT5.9-GM100	100/1800	6	102×120	5.9	18.68	1920*895*1300	1250
CCFJ90JW	90 112.5	60/440	6BTA5.9-GM120	120/1800	6	102×120	5.9	22.41	1995*895*1300	1300
CCFJ100JW	100 125	60/440	6BTA5.9-GM120	120/1800	6	102×120	5.9	24.94	2110*895*1360	1650
CCFJ120JW	120 150	60/440	6CTA8.3-GM175	175/1800	6	114×135	8.3	29.93	2110*860*1360	1700
CCFJ150JW	150 187.5	60/440	6CTA8.3-GM175	175/1800	6	114×135	8.3	37.41	2685*860*1790	1750
CCFJ250J	250 312.5	60/440	NTA855-DM	287/1800	6	140×152	14.0	61.18	2760*995*1790	3180
CCFJ250JW	250 312.5	60/440	N855-DM	287/1800	6	140×152	14.0	61.18	2760*995*1790	3180
CCFJ280J	280 350	60/440	NTA855-DM	313/1800	6	140×152	14.0	66.07	2850*995*1790	3250
CCFJ280JW	280 350	60/440	N855-DM	313/1800	6	140×152	14.0	66.07	2850*995*1790	3250
CCFJ350J	350 437.5	60/440	KTA19-DM	392/1800	6	159×159	19.0	84.82	3170*1000*1905	3800
CCFJ380JW	380 475	60/440	K19-DM	425/1800	6	159×159	19.0	95	3170*1000*1905	3850
CCFJ400J	400 500	60/440	KTA19-DM	463/1800	6	159×159	19.0	96.94	3170*1000*1905	3950
CCFJ400JW	400 500	60/440	K19-DM	485/1800	6	159×159	19.0	96.94	3170*1000*1905	3950
CCFJ450J	450 562.5	60/440	KTA19-DM	507/1800	6	159×159	19.0	109.06	3550*1000*1905	4000
CCFJ600J	600 625	60/440	KTA38-DM	679/1800	12	159×159	38.0	146.11	4100*1500*2500	6300
CCFJ700J	700 875	60/440	KTA38-DM	809/1800	12	159×159	38.0	170.47	4100*1500*2500	6400
CCFJ720J	720 900	60/440	KTA38-DM	821/1800	12	159×159	38.0	180	4100*1500*2500	6400
CCFJ720JW	720 900	60/440	K38-DM	821/1800	12	159×159	38.0	180	4100*1500*2500	6400
CCFJ800J	800 1000	60/440	KTA38-DM	1007/1800	12	159×159	38.0	197.82	4100*1500*2500	7100
CCFJ800JW	800 1000	60/440	K38-DM	970/1800	12	159×159	38.0	197.82	4100*1500*2500	7100
CCFJ900J	900 1125	60/440	KTA38-DM	1007/1800	12	159×159	38.0	219.18	4250*1500*2500	7500
CCFJ1150JW	1150 1438	60/440	K50-DM	1291/1800	12	159×159	50.0	287.5	4250*1500*2500	7500



标准配置 Standard equipment

- 发动机  
Diesel engine
- 发电机  
Alternator
- 智能控制屏  
Digital control panel
- 钢式底架  
Steel base frame

可选配置 Optional equipment

- 静音箱  
Sound proof
- 船用消声器  
Marine silencer
- 水套加热器  
Water heater
- 自动并机控制系统  
Automatic parallel synchronizing control system





■ 康明斯船用系列 ( 应急发电机组50Hz )

江豪康明斯船用发电机组选用康明斯船用柴油机为动力，功率范围40kW-600kW ( 50KVA-725KVA )，可选配马拉松、斯坦福、孚日等国内外知名品牌发电机。该系列发电机组质量优异，可靠性高，可提供柴油机国际防止空气污染证书以及CCS、BV船检证书。广受用户好评。

■ Cummins marine series (Emergency type 50Hz)

Jianghao Cummins marine generator powered by Cummins marine diesel engine, power range from 40 kw to 600 kw (50KVA - 725KVA), We have marathon, Stanford, Sunvim and other famous brands alternators to meet your demands. This series of genset is of excellent quality and high reliability, We can provide international air pollution-prevented certification and the certificate of CCS, BV classification survey.which is praised by our customers.



标准配置 Standard equipment

- 发动机  
Diesel engine
- 发电机  
Alternator
- 智能控制屏  
Digital control panel
- 钢式底架  
Steel base frame

可选配置 Optional equipment

- 静音箱  
Sound proof
- 船用消声器  
Marine silencer
- 水套加热器  
Water heater
- 自动并机控制系统  
Automatic parallel synchronizing control system

■ 康明斯船用系列 ( 应急发电机组50Hz ) 技术参数

Cummins marine generator (Emergency type 50Hz) technical parameters

机组型号 Model	功率Power KW KVA	频率/电压 Fre/ Volt	发动机型号 Engine model	发动机功率 Engine Power	缸数 Cylinder	缸径*行程 Bore*Stroke	排气量L Displacement	油耗 L/h Consumption	尺寸mm Size	重量Kg Weight
CCFJ40YW	40 50	50/400	4BTA3.9-GM47	47/1500	4	102×102	3.9	10.02	1810*730*1280	1000
CCFJ50YW	50 63	50/400	6BT5.9-GM83	83/1500	6	102×120	5.9	12.47	2090*790*1280	1100
CCFJ75YW	75 94	50/400	6BT5.9-GM83	83/1500	6	102×120	5.9	18.71	2180*790*1280	1450
CCFJ90YW	90 112.5	50/400	6BTAA5.9-GM115	115/1500	6	114×135	8.3	22.45	2260*790*1390	1500
CCFJ100YW	100 125	50/400	6BTAA5.9-GM115	115/1500	6	114×135	8.3	24.94	2280*790*1390	1550
CCFJ120YW	120 150	50/400	6CTA8.3-GM155	155/1500	6	114×135	8.3	29.93	2300*790*1390	2500
CCFJ150YW	150 187.5	50/400	6LTAA8.9-GM200	200/1500	6	114×145	8.9	36.71	2390*950*1750	2600
CCFJ180YW	180 225	50/400	6LTAA8.9-GM200	200/1500	6	114×145	8.9	36.71	2390*950*1750	2700
CCFJ200YW	200 250	50/400	NTA855-DM	240/1500	6	140×152	14.0	48.94	2890*1220*1750	2750
CCFJ250YW	250 312.5	50/400	NTA855-DM	284/1500	6	140×152	14.0	61.18	3010*1220*1750	2850
CCFJ300YW	300 375	50/400	KTA19-DM	336/1500	6	159×159	19.0	72.71	3550*1500*2350	3100
CCFJ350YW	350 437.5	50/400	KTA19-DM	403/1500	6	159×159	19.0	84.82	3550*1500*2350	3600
CCFJ400YW	400 500	50/400	KTA19-DM	448/1500	6	159×159	19.0	96.94	3550*1500*2350	3800
CCFJ500YW	500 625	50/400	KT38-DM	560/1500	12	159×159	38.0	121.76	4800*1780*2350	7300
CCFJ600YW	600 725	50/400	KTA38-DM	664/1500	12	159×159	38.0	146.12	4800*1780*2350	7500





■ 康明斯船用系列 ( 应急发电机组60Hz )

江豪康明斯船用发电机组选用康明斯船用柴油机为动力，功率范围40kW-400kW ( 50KVA-500KVA )，可选配马拉松、斯坦福、孚日等国内外知名品牌发电机。该系列发电机组质量优异，可靠性高，可提供柴油机国际防止空气污染证书以及CCS、BV船检证书。广受用户好评。

■ Cummins marine series (Emergency type60Hz)

Jianghao Cummins marine generator powered by Cummins marine diesel engine, power range from 40 kw to 400 kw (50KVA - 500 KVA), We have marathon, Stanford, Sunvim and other famous brands alternators to meet your demands. This series of genset is of excellent quality and high reliability, We can provide international air pollution-prevented certification and the certificate of CCS, BV classification survey.which is praised by our customers.



■ 康明斯船用系列 ( 应急发电机组60Hz ) 技术参数

Cummins marine generator (Emergency type 60Hz) technical parameters

机组型号 Model	功率Power KW KVA	频率/电压 Fre/ Volt	发动机型号 Engine model	发动机功率 Engine Power	缸 数 Cylinder	缸径*行程 Bore*Stroke	排气量L Displacement	油耗 L/h Consumption	尺寸mm Size	重量Kg Weight
CCFJ40YW	40 50	60/440	4BTA3.9-GM65	65/1800	4	102X102	3.9	10.02	1810*730*1280	1000
CCFJ50YW	50 63	60/440	4BTA3.9-GM65	65/1800	4	102X102	3.9	12.53	2090*730*1280	1100
CCFJ64YW	64 80	60/440	6BT5.9-GM100	100/1800	6	102X120	5.9	15.96	2180*790*1280	1400
CCFJ75YW	75 93.75	60/440	6BT5.9-GM100	100/1800	6	102X120	5.9	18.71	2180*790*1280	1450
CCFJ90YW	90 112.5	60/440	6BTA5.9-GM120	120/1800	6	102X120	5.9	22.45	2260*790*1390	1500
CCFJ100YW	100 125	60/440	6BTA5.9-GM120	120/1800	6	102X120	5.9	24.94	2280*790*1390	1550
CCFJ120YW	120 150	60/440	6CTA8.3-GM175	175/1800	6	114X135	8.3	29.93	2300*790*1390	2500
CCFJ150YW	150 187.5	60/440	6CTA8.3-GM175	175/1800	6	114X135	8.3	37.41	2390*790*1390	2600
CCFJ200YW	200 250	60/440	NTA855-DM	287/1800	6	140X152	14.0	48.94	2950*1220*1750	2750
CCFJ250YW	250 312.5	60/440	NTA855-DM	313/1800	6	140X152	14.0	61.18	3010*1220*1750	2850
CCFJ400YW	400 500	60/440	KTA19-DM	463/1800	6	159X159	19.0	96.94	3550*1500*2350	3800



标准配置 Standard equipment

- 发动机  
Diesel engine
- 发电机  
Alternator
- 智能控制屏  
Digital control panel
- 钢式底架  
Steel base frame

可选配置 Optional equipment

- 静音箱  
Sound proof
- 船用消声器  
Marine silencer
- 水套加热器  
Water heater
- 自动并机控制系统  
Automatic parallel synchronizing control system



■ 潍柴动力船用系列柴油发电机组 (50Hz)

江豪潍柴动力船用发电机组选用潍柴动力船用柴油机为动力，功率范围24kW-300kW (30KVA-375KVA)，可选配马拉松、斯坦福、孚日等国内外知名品牌发电机。该系列发电机组性价比高，适应能力强，可提供柴油机国际防止空气污染证书以及CCS、BV船检证书。被越来越多的客户所接受。

■ Weichai Power marine series (50Hz)

Jianghao Weichai power marine generator set chooses Weichai power marine diesel engine as power, which ranges from 24 kw to 300 kw (30 kva - 375 kva), alternator optional including marathon, Stamford, Sunvim and other famous brand. The series set is very reasonable. We can provide international air pollution-prevented certification and the certificate of CCS, BV classification survey. Weichai power marine generator are accepted by more and more customers.



■ 潍柴动力船用系列发电机组技术参数 (50Hz)

Weichai Power marine generator technical parameters (50Hz)

机组型号 Model	功率Power KW KVA	频率/电压 Fre/ Volt	发动机型号 Engine model	发动机功率 Engine Power	缸数 Cylinder	缸径*行程 Bore*Stroke	排气量L Displacement	油耗 L/h Consumption	尺寸mm Size	重量Kg Weight
CCFJ24JW	24 30	50/400	D226B-3CD	33/1500	3	105*120	3.117	5.52	1580*1200*1180	1130
CCFJ30JW	30 37.5	50/400	TD226B-3CD	44/1500	3	105*120	3.117	6.9	1590*1200*1180	1150
CCFJ40JW	40 50	50/400	WP4CD66E200	66/1500	4	105*130	4.5	8.2	1775*1200*1180	1250
CCFJ50JW	50 62.5	50/400	WP4CD66E200	66/1500	4	105*130	4.5	10.25	1775*1200*1180	1290
CCFJ64JW	64 80	50/400	WP4CD100E200	100/1500	4	105*130	4.5	13.12	1775*1250*1210	1330
CCFJ75JW	75 93.8	50/400	WP4CD100E200	100/1500	4	105*130	4.5	15.38	1775*1250*1210	1350
CCFJ90JW	90 112.5	50/400	WP6CD132E200	132/1500	6	105*130	6.75	18.9	2205*1250*1270	1640
CCFJ100JW	100 125	50/400	WP6CD132E200	132/1500	6	105*130	6.75	21	2205*1250*1270	1640
CCFJ120JW	120 150	50/400	WP6CD152E200	152/1500	6	105*130	6.75	25.2	2260*1250*1270	1650
CCFJ150JW	150 187.5	50/400	WP10CD200E200	200/1500	6	126*130	9.726	29.21	2600*1250*1530	1950
CCFJ180JW	180 225	50/400	WP10CD238E200	238/1500	6	126*130	9.726	35.66	2600*1250*1550	1980
CCFJ200JW	200 250	50/400	WP10CD264E200	264/1500	6	126*130	9.726	40.1	2700*1250*1620	2100
CCFJ250JW	250 312.5	50/400	WP12CD317E200	317/1500	6	126*155	11.596	52.5	2730*1250*1660	2180
CCFJ300JW	300 375	50/400	WP13CD385E200	385/1500	6	127*165	12.54	63	2840*1250*1660	2300



标准配置 Standard equipment

- 发动机  
Diesel engine
- 发电机  
Alternator
- 智能控制屏  
Digital control panel
- 钢式底架  
Steel base frame

可选配置 Optional equipment

- 静音箱  
Sound proof
- 船用消声器  
Marine silencer
- 水套加热器  
Water heater
- 自动并机控制系统  
Automatic parallel synchronizing control system

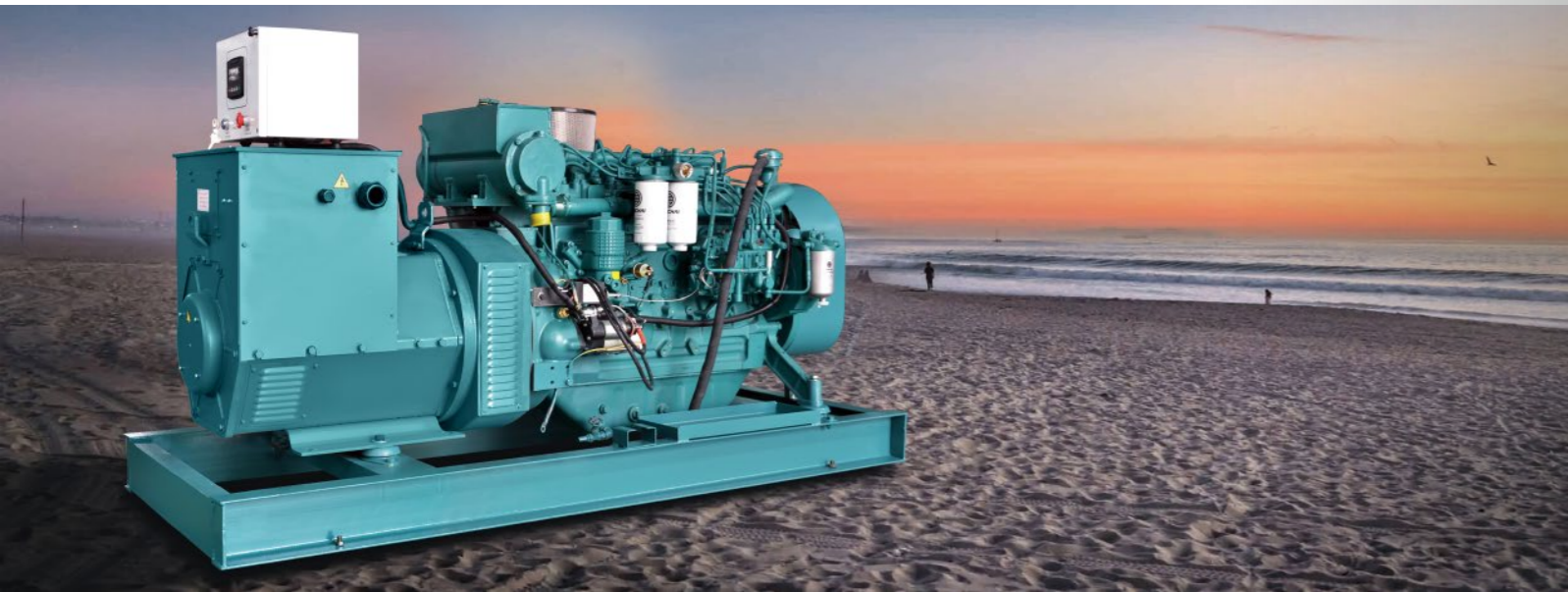


■ 潍柴动潍柴动力船用系列柴油发电机组 (60Hz)

江豪潍柴动力船用发电机组选用潍柴动力船用柴油机为动力，功率范围24kW-300kW (30KVA-375KVA)，可选配马拉松、斯坦福、孚日等国内外知名品牌发电机。该系列发电机组性价比高，适应能力强，可提供柴油机国际防止空气污染证书以及CCS、BV船检证书。被越来越多的客户所接受。

■ Weichai Power marine series (60Hz)

Jianghao Weichai power marine emergency type generator set chooses Weichai power marine diesel engine as power, which ranges from 24 kw to 300 kw (30 kva - 375 kva), alternator optional including marathon, Stamford, Sunvim and other famous brand. The series set is very reasonable. We can provide international air pollution-prevented certification and the certificate of CCS, BV classification survey. Weichai power marine generator are accepted by more and more customers.



■ 潍柴动力船用系列技术参数 (60Hz)

Weichai Power marine generator technical parameters (60Hz)

机组型号 Model	功率Power KW KVA	频率/电压 Fre/ Volt	发动机型号 Engine model	发动机功率 Engine Power	缸数 Cylinder	缸径*行程 Bore*Stroke	排气量L Displacement	油耗 L/h Consumption	尺寸mm Size	重量Kg Weight
CCFJ24JW	24 30	60/440	D226B-3CD1	40/1800	3	105×120	3.117	5.52	1580×1200×1180	1130
CCFJ30JW	30 37.5	60/440	TD226B-3CD1	44/1800	3	105×120	3.117	6.9	1590×1200×1180	1150
CCFJ40JW	40 50	60/440	WP4CD66E201	66/1800	4	105×130	4.5	8.2	1775×1200×1180	1250
CCFJ50JW	50 62.5	60/440	WP4CD66E201	66/1800	4	105×130	4.5	10.25	1775×1200×1180	1290
CCFJ64JW	64 80	60/440	WP4CD100E201	100/1800	4	105×130	4.5	13.12	1775×1250×1210	1330
CCFJ75JW	75 93.8	60/440	WP4CD100E201	100/1800	4	105×130	4.5	15.38	1775×1250×1210	1350
CCFJ90JW	90 112.5	60/440	WP6CD132E201	132/1800	6	105×130	6.75	18.9	2205×1250×1270	1640
CCFJ100JW	100 125	60/440	WP6CD132E201	132/1800	6	105×130	6.75	21	2205×1250×1270	1640
CCFJ120JW	120 150	60/440	WP6CD158E201	158/1800	6	105×130	6.75	25.2	2260×1250×1270	1650
CCFJ150JW	150 187.5	60/440	WP10CD200E201	200/1800	6	126×130	9.726	29.21	2600×1250×1530	1950
CCFJ180JW	180 225	60/440	WP10CD238E201	238/1800	6	126×130	9.726	35.66	2600×1250×1550	1980
CCFJ200JW	200 250	60/440	WP10CD264E201	264/1800	6	126×130	9.726	40.1	2700×1250×1620	2100
CCFJ250JW	250 312.5	60/440	WP12CD317E201	317/1800	6	126×155	11.596	52.5	2730×1250×1660	2180
CCFJ300JW	300 375	60/440	WP13CD385E201	385/1800	6	127×165	12.54	63	2840×1250×1660	2300



标准配置 Standard equipment

- 发动机  
Diesel engine
- 发电机  
Alternator
- 智能控制屏  
Digital control panel
- 钢式底架  
Steel base frame

可选配置 Optional equipment

- 静音箱  
Sound proof
- 船用消声器  
Marine silencer
- 水套加热器  
Water heater
- 自动并机控制系统  
Automatic parallel synchronizing control system



## ■ 移动电站

移动柴油发电机组有多种结构和功能，有手推式、三轮、四轮、汽车电站、拖车电站、移动低噪音、移动集装箱电站等。该系统是我公司参照多家国外移动电站结构，自行设计和生产的，具有良好的操作性能和安全性能。移动电站车架采用槽梁焊接成框架结构，节点选择合理、强度高、刚性好；同时装有钢板弹簧悬架结构；拖车采用高度可调节插销式牵引架，适用于各种高度牵引车；采用圆形钢管焊接直通式车轴，结构紧凑，安全可靠。

- 牵引：采用活动式挂钩，360°转盘、转向灵活、确保行驶中的安全。
- 制动：同时具有可靠的手摇式刹车系统和气刹接口，确保行驶中的安全性。
- 支撑：为保证电源车操作时的稳定性，可选配4只机械或液压支撑装置。
- 门窗：前部有通风窗，后部有对开大门，两侧有门可供操作人员操作。
- 照明：车箱内有吸顶防爆灯，右侧有工作台，并配有工作台灯，方便工作人员操作。
- 防音：车厢采用双层装饰，并装有吸音板消音；排气管用保温棉包裹，噪音最低可控制在72dB(A)以内。
- 外部美观：油漆采用高分子聚氨酯油漆，颜色可由业主自定，排气管采用上排气，确保美观。
- 尺寸：车厢尺寸根据规格大小而定，操作人员可在四周行走，便于操作和维护。
- 消防：随车可选配消防灭火器两只。

## ■ Mobile power station

Mobile diesel generators have a variety of structures and functions, with hand-push, three-wheel, four-wheel, car power station, trailer power station, mobile silent, mobile container power station. The system is my company with reference to a number of foreign mobile power plant structure, design and production, with good operating performance and safety performance. The mobile power station frame adopts the groove beam to be welded into the frame structure, reasonable node selection, high strength and good rigidity. At the same time, matched with the steel plate spring suspension structure. The trailer adopts the height adjustable plug type traction frame, Round steel pipe straight through the axle, taht is compact, safe and reliable.

- traction: using mobile hook, 360 ° turntable, flexible steering, ensure the safety running.
- braking: braking: at the same time with reliable ShouYaoShi brake system and brake interface, ensure the safety of driving.
- bolster: to ensure the stability of the power truck operation, with four only mechanical or hydraulic support device.
- doors&windows: the anterior have ventilated hind have outside the window, doors, two side door for operating personnel.
- lighting: the trunk inside suction a top lamp, right have workbench, and is equipped with work desk lamp, convenient job personnel.
- sound protection: power supply of car trunk, door to wait all use double decoration, and equipped with sound-absorbing board censored, Exhaust propensities insulation cotton package, the lowest noise can be controlled in 72dB (A) within.
- external appearance: paint USES macromolecule polyurethane paints, colour can be made by the owner, exhaust the exhaust, ensure the beautiful.
- size: carriage size based on the different size and decide, the operator can walk around, easy operation and maintenance.
- fire-fighting: fire extinguishers accessory is equipped with two.





### ■ 静音发电机组

外形美观，结构合理。密封性好，全封闭箱体，2mm钢板制作而成，防雨、防雪、防尘，能在恶劣的环境下工作。防音效果好，箱体内采用高频、中频、低频PUR型阻燃吸音棉，有效降低机组各处传出的不同噪音。消声器采用高效阻性消声器，降低机组排烟口噪音。起吊方便，机组为了方便运输，在箱体设置4个起吊装置。

### ■ Silent generator advantages

Beautiful appearance, reasonable structure. Good sealing, closed canopy, 2mm plate maded, It is rainproof, snowproof, dustproof, and can work in harsh environment. Excellent sound insulation, the canopy adopt high-frequency, intermediate frequency and low frequency PUR flame retardant sound-absorbing cotton, which effectively reduces the noise from everywhere. Muffler with high efficiency resistive muffler, reduce noise from the unit exhaust port. For easy to lift and transport, we set up 4 lifting devices in the canopy.





### ■ 机组标准配置：四保护控制屏

- 启动/停车控制功能
- 三相交流电流电压显示
- 频率表/水温表/时间表/电池电压显示
- 超速、高水温、低油压、充电失败
- 低油压、高水温、超速紧急停机及其他预置保护

### ■ Protection system control panel

- Start/stop controller
- 3-phase ac electric meter
- Frequency table/water thermometer/schedule/battery voltmeter
- Speeding, high temperature, low oil pressure, charging failure
- Low oil pressure, high temperature, speeding emergency stop and other presets protection

### ■ 无市电（失压）自启动控制屏

- 该控制屏除了具有标准的手动控制屏功能与配置外，且附加远程控制接口
- 自动/停车/手动功能选择
- 启动延时（3-5秒可调）
- 停机延时（0-270秒可调）
- 3次自动启动功能
- 报警功能增加：低速/超速、输出电压故障、启动失败、高水温、高油温预警、停电停机
- 保护功能增加：低速/超速、启动失败、输出电压故障（过压、欠压、过流）

### ■ No mains Auto startup control panel

- The control panel has the standard manual control screen function and configuration, and additional remote control interface
- Automatic/stop/manual function selection
- Start-up time delay (3-5 seconds adjustable)
- Downtime delay (0-270 seconds adjustable)
- 3 times automatically activated function
- Alarm function increased: low/high speed, output voltage failure, start-up failure, high temperature, high oil temperature forecasting warning, no power outage
- More protection function: low/high speed, failure to start, output voltage failure (over-voltage, undervoltage, flow)

### ■ 全自动转换柜

对于特殊环境要求的场合下，双电源自动转换装置（ATS）是必要的，ATS可以在无人操作的情况下实现主电源（即市电）和应急电源（即发电机组）之间的切换。当主电源断电或电压低于正常电压时，ATS自动将在0-10秒（可调节）内启动应急发电机组，然后将负载用电从主电源切换到应急电源（发电机组）上，发电机组给负载供电。反之，当主电源恢复正常时，ATS自动将负载用电从应急电源上切换到主电源，然后自动停机。

3个功能操作转换位置（关闭，自动，手动）；市电供电显示；发电机组供电显示；市电或发电机组电压显示。

### ■ Automatic transfer cabinet

For special occasions, environmental requirements of double electrical automatic switching device (ATS) is necessary, the ATS can unmanned realize the mains (namely utility) and emergency power (namely genset) between the switch. When the mains power voltage or below the normal voltage, ATS will automatically at 0-10 seconds (adjustable) inside startup emergency generator, then will load from the mains electricity switch to the emergency power supply (genset), generator to load power supply. Conversely, when the mains are back to normal, then ATS will automatically load electricity from the emergency power on the switch to the mains, then automatically stop.

3 function (closed, automatic and manual); Utility power supply display; Generator power supply display; Utility or generator voltage display.

### ■ 并车控制系统

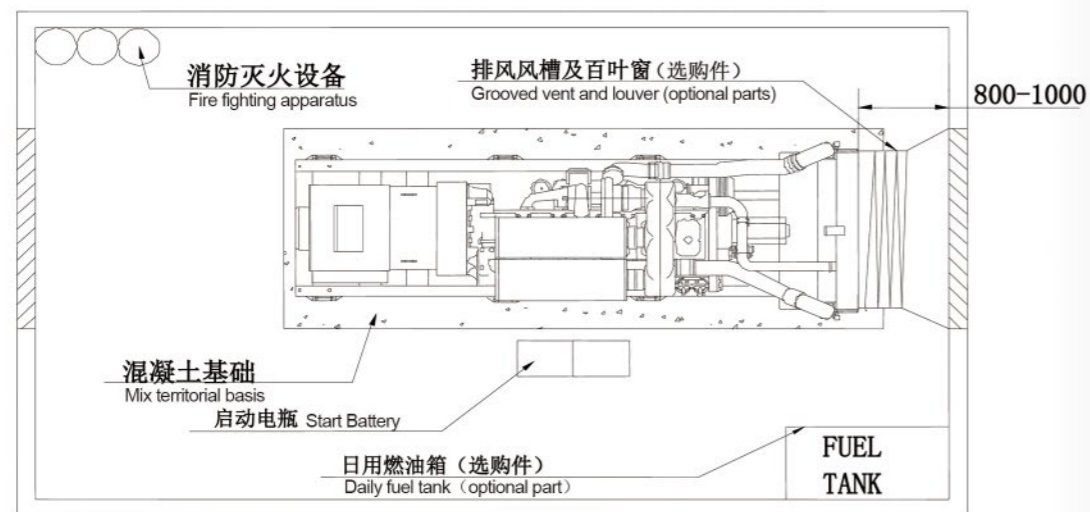
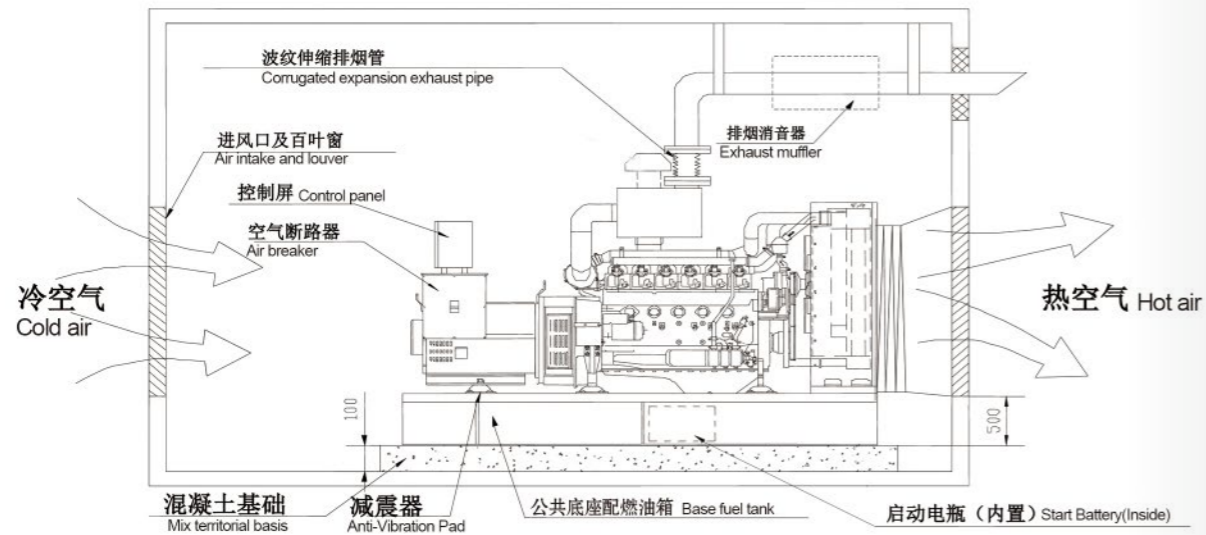
并车控制系统可以控制两台或多台柴油发电机组并车运行。该系统具显著优点：成本仅需要大功率机组的50-70%，降低了购买成本；根据负载大小，自动投入适当台数，降低了使用成本；小功率机组配件充足并且维修费用比大功率机组低；轮休制工作模式，机组使用寿命提升；在并网系统中，一台机组发生故障时，其他机组可继续使用，有效应对紧急情况。

### ■ Parallel synchronizing control panel

Parallel synchronizing control system can control two or more diesel generator sets to work together. As below are advantages: Reducing the purchase cost: buy a multitude of small power units and buying single powerful units, compared to only need cost 50% to 70%; You can use some of generator sets according to load, which can reduce the using cost; Small power generator sets have spare parts and maintenance cost is lower than high power generator sets; Rest by turns mode significantly enhances the service life of the generator set; in grid system, even when a unit fails down, still some units can continue to use, which avoids the single failed unit causing all fail down.







此示意图是我公司推荐的标准机房及安装方法，正确安装排气、排风管道，正确选用润滑油、燃油及冷却液，对发电机组的正常使用及输出额定功率至关重要！详细内容请向本公司客户支持部联系。

This graph motioned is our company recommendation: standard rooms, installation method, correct installation for exhaust and exhaust pipes, correct choice of lubricating oil, fuel and cooling fluid, which are crucial to the normal use of generator set and rated output power. To more details, please contact our customer supporting department.

## ■ 我们的服务 OUR SERVICE

### ★质量保证 Quality insurance

对我们公司提供的各种柴油发电机组，均可享有12个月或1000小时（以先到为准）保修。一切因发电机组制作缺陷引起的故障，均由我公司负责联系修复。机组易损件、日常使用消耗件、人为错误操作，疏忽保养导致的损坏不在此质量保证范围内。

For each category generator provided in our company, all can share 12 months or 1,000 work hours maintenance. All the troubles arose from the structure defect, We guarantee to repair. Otherwise, we don't provide the quality insurance such as wearing parts, daily consumable parts, wrong man-made operation and maintenance ignorance.

### ★售前服务 Before sales service

售前免费提供负载容量分析、选型配套、技术咨询、协助用户机房布置、设备安装规划。

Pre-sale free charge: burden capacity analysis, category selection, technology consultation, assistance with machinery room collocation and advice for facilities installation.

### ★售中服务 Sales service

为使客户正确掌握各种型号发电机组的操作、使用和保养，我公司特地为用户免费提供现场或到我公司接受不同类型发电机组的培训课程。

For helping customers to master the operation, usage and the maintenance correctly, Our company in particular provide free site and training courses of different types of generators.

### ★售后服务 After sales service

我公司非常重视售后服务，对用户建立电脑存档，跟踪服务，定期服务，定期巡检。维修中心具有快速的反应管理系统，在接到用户通知1小时内响应，进行电话指导排除故障，如仍然解决不了，将由公司售后服务部门安排最近维修点维修，服务人员第一时间到用户现场进行维修服务和技术指导。对顾客质量问题的投诉，我们将严格遵循实事求是的原则，派专人负责到底，在最短的时间内给顾客满意的答复。

Our company attaches great importance to after-sales service, the user to establish a computer archive, tracking services, regular inspection services. Maintenance center with a rapid response management system, when we receive a notification from customers, we will assist to solve the trouble within 1 hour. If fail, our after-sale service department will arrange people from the nearest maintenance point to help solve. Any customer's complaints about quality, we will strictly follow the principle to give customers a satisfying answer in the shortest time.

